



Annual Report

2025

EASL Office Home of Hepatology
7 rue Daubin
1203 Geneva, Switzerland
+41(0)22 807 03 60
easloffice@easloffice.eu
www.easl.eu

About Us

EASL, the European Association for the Study of the Liver, is a medical association dedicated to pursuing excellence in liver research, to the clinical practice of liver disorders, and to providing education to all those interested in hepatology.



Our Vision

Beating liver disease.
Promoting liver health.

Our Mission

To be the Home of Hepatology for everyone engaged in beating liver diseases.

We are committed to fostering awareness, prevention and the best possible patient care.

Our Strategic Pillars

Education

1. Enhance hepatology knowledge, skills, and competencies to improve patient care and outcomes.
2. Set the European standards for hepatology training and the application of Clinical Practice Guidelines.
3. Drive innovation through independent education, technology, and dynamic environments.
4. Promote career development, mentorship, and research opportunities.

Advocacy

1. Shape liver health policy at European and global levels.
2. Raise public awareness and understanding of liver health.
3. Strengthen the voice of patient organisations.
4. Educate hepatologists and health professionals on public health and prevention.

Science

1. Lead events to review and exchange science in the field of hepatology.
2. Advance medical science and patient care through high-quality research publications.
3. Drive evidence-based care with robust Clinical Practice Guidelines.
4. Champion impactful hepatology research projects, and integrate basic, translational, and clinical science across all EASL activities.

Leadership

1. Build an engaged EASL Community which reflects and represents the diverse global stakeholders dedicated to beating liver diseases.
2. Deliver valuable resources, opportunities, and services to enhance the professional growth of EASL members and the liver community.
3. Foster a strong interprofessional environment for cross-disciplinary collaboration.
4. Shape the future of hepatology through strategic partnerships.

EASL operates with a strong commitment to People, Purpose, and Planet, ensuring that our work positively impacts individuals, drives meaningful progress in liver health, and supports environmental sustainability. These values guide every decision, from our initiatives to our collaborations.

P eople

EASL values diversity, equality, and inclusion, fostering interdisciplinary collaboration to ensure accessible liver care for all. Our commitment is reflected in our EDI Policy, HR Policy, and updated Code of Conduct.

P urpose

EASL is committed to being fit for purpose, ensuring accountability, governance, and excellence in business practices. With strict process alignment, cost containment, and effective fundraising, we support our mission and serve our community with the highest standards.

P lanet

EASL prioritises sustainability, from energy-efficient operations and eco-conscious event design and partnerships. We strive to reduce resource consumption, prioritising local sourcing, and encouraging reuse and recycling wherever possible.

Our Values



Table of Contents

1.	Message from our Secretary General and Vice-Secretary	2
2.	EASL: Education	5
3.	EASL: Advocacy	11
4.	EASL: Science	17
5.	EASL: Leadership	24
6.	Financial Report	41
7.	Partners	50

MESSAGE FROM OUR SECRETARY GENERAL AND VICE-SECRETARY

With this annual report, we reflect on what has been a truly exceptional year for our Association, one that honours our past while positioning us strongly for the future.

This year EASL will celebrate its 60th anniversary. From its beginnings in 1966, when a small group of pioneering hepatologists gathered to exchange ideas and advance a new discipline, EASL has grown into a global community united by a shared commitment to science, collaboration and improving the lives of those affected by liver disease. The founding vision, to bring together active and inquisitive minds to share knowledge openly, continues to underpin everything we do today.

Our field has been shaped by extraordinary individuals whose scientific insight, mentorship and integrity have transformed hepatology and left a lasting impact on clinical practice and patient care. Their legacy is not only reflected in the progress we have made, but in the values that continue to guide us, curiosity, collaboration, resilience and a commitment to equity. As we look ahead, it is our responsibility to sustain and build upon these principles.

Progress, however, must extend beyond scientific achievement alone. It requires us to ensure that opportunity, representation and voice are shared across our community. EASL today is more diverse, more inclusive and more global than ever before, with a growing proportion of women, trainees and young investigators contributing to and shaping our work. This evolution is essential to the strength and relevance of our Association.

Looking to the future, we have framed our collective ambition through the LIVER principles. These reflect our commitment to levelling the platform across disciplines, geographies and generations, to embedding inclusivity as a driver of innovation, to strengthening the visibility of liver health in public discourse, to advancing the elimination of liver disease and to ensuring recognition of liver health as fundamental to overall wellbeing. Together, these priorities define not only what we aim to achieve, but how we will achieve it.

The progress made in the last 12 months demonstrates the strength of this shared direction. [Education](#) has remained a cornerstone of our mission, with important advances in structured training and the continued evolution of our digital learning platforms.

This momentum continued in 2026 with the launch of Talk Liver to Me (TLTM), our new podcast offering flexible, on demand insights for the hepatology community. In parallel, EASL DeepDive has completed its first year, providing high quality, in depth webinars that keep professionals up to date with the latest developments in the field.

Our [advocacy](#) efforts have expanded, strengthening EASL's presence within European policy discussions and reinforcing our role in global initiatives that raise awareness and drive change. Key achievements include the publication of the new Lancet Commission report on Liver Health in Europe, the landmark WHO draft resolution recognising steatotic liver disease within the global noncommunicable disease agenda, and the launch of the European Health Alliance on Alcohol, bringing together leading organisations to advocate for stronger, evidence based public health policies.

[Scientific](#) excellence continues to define our work. The success of our Congress and focused meetings, alongside the impact of our journals, guidelines and position papers, reflects the vitality of our community and its ability to lead innovation in hepatology. This was further demonstrated by two successful summits at the start of 2026, the Liver Cancer Summit in Edinburgh and the SLD Summit in Budapest, as well as by the outstanding performance of our journals, with the Journal of Hepatology reaching a record Impact Factor of 33.0 and JHEP Reports achieving 7.5.

At the same time, we have strengthened support for the next generation through the relaunch of our Fellowship Programme, fostering collaboration and professional development across Europe, and through the launch of the Viral HOPE programme, a major multi year initiative advancing research, policy and implementation towards viral hepatitis elimination. Emerging areas such as artificial intelligence and novel therapeutic approaches continue to open new pathways for research and care.

We have also continued to strengthen our governance and community, with greater diversity in [leadership](#), stronger engagement of early career professionals and the integration of new disciplines into our work. These steps are essential to ensuring that EASL remains dynamic, representative and prepared for the challenges ahead.

The global burden of liver disease continues to rise, steatotic liver disease remains insufficiently recognised within the non communicable disease agenda and inequalities in access to care persist. Addressing these issues will require sustained collaboration, clear policy direction and a continued focus on prevention and early detection.

EASL ANNUAL REPORT 2025

None of the achievements of 2025 would have been possible without the dedication and expertise of our members, volunteers, partners and staff. Their commitment is the foundation of EASL's success and its continued growth.

As we celebrate our 60th anniversary, we do so with confidence and a strong sense of purpose. Guided by our shared values and a clear vision for the future, we will continue to advance liver health and work towards a world where it is understood, prioritised and accessible to all.



SECRETARY GENERAL
Debbie Shawcross



VICE-SECRETARY
Ana Lleo

Education

EASL is dedicated to being the leading independent and relevant resource for education and professional development in liver health and research. Our range of formats, from online platforms to training opportunities, cater to basic scientists, healthcare professionals at all levels as well as patients. Our initiatives aim to enhance knowledge, skills, and competencies in hepatology, ultimately improving patient care.

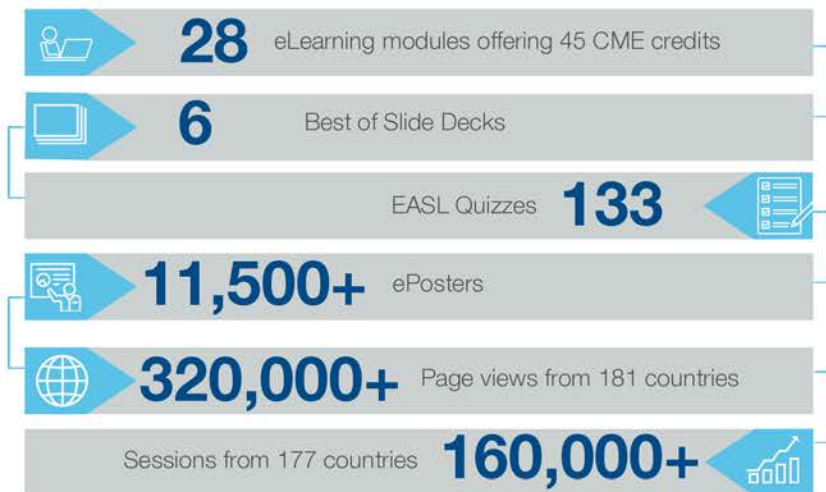
E





EASL Campus is a comprehensive, independent, and accredited eLearning platform offering high-quality, up-to-date education in hepatology. It supports flexible, learner-centred training for healthcare professionals and researchers, advancing knowledge in the diagnosis and treatment of liver diseases to improve global liver health.

EASL CAMPUS METRICS 2025



EASL DeepDive

A CME-accredited webinar series providing in-depth education on key hepatology topics.

EASL Molecular Tumour Board

An expert-led educational session providing multidisciplinary review of complex liver cancer cases to guide personalised treatment strategies and support clinical decision-making.

EASL Online courses

Online courses providing structured, accredited training across key hepatology topics, supporting flexible learning and continuous professional development.

EASL Genetic Grand Round

A session exploring rare and genetic liver diseases, providing insights into diagnosis, management, and complex clinical cases.

EASL QUIZ

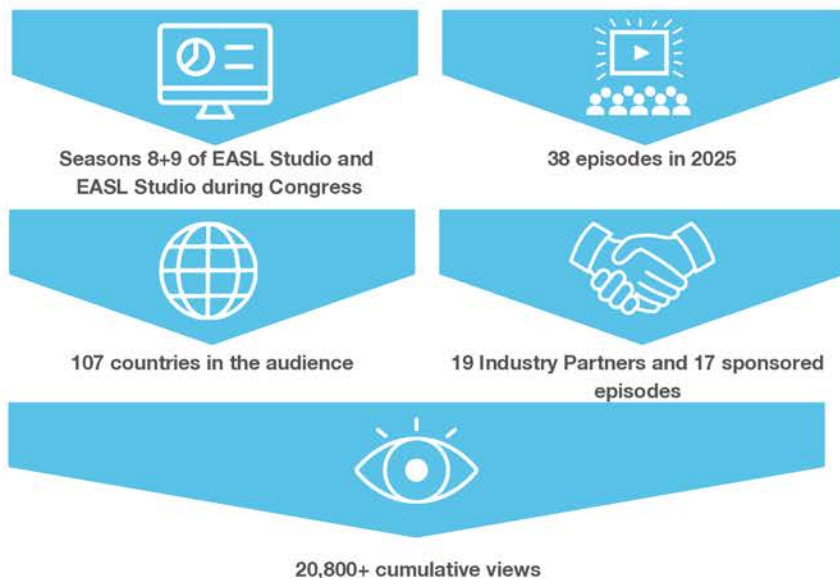
An interactive learning tool designed to test and enhance knowledge in hepatology through case-based questions.



EASL STUDIO

- Debbie Shawcross, UK
- Ana Leo, Italy
- Ahmed Elsharkawy, UK
- Sven Francque, Belgium
- Thomas Marjot, UK
- Maja Thiele, Denmark
- Nuria Fabrellas, Spain
- Rajiv Jalan, UK
- Verena Keitel, Germany
- Wim Laleman, Belgium
- Sabela Lens, Spain
- Josep M. Llovet, Spain
- Vlad Ratziu, France
- Pierre-Emmanuel Rautou, France
- Thomas Reiberger, Austria
- Pedro Rodrigues, Spain
- Anna Saborowski, Germany
- José Willemse, the Netherlands
- Shira Zelber-Sagi, Israel

EASL Studio is a weekly, digital initiative with live broadcasts featuring interviews, debates, and roundtables. Liver disease and research experts have discussions on multidisciplinary topics. EASL events offer special live editions bringing the latest news and highlights in hepatology.



EASL SCHOOLS OF HEPATOLOGY AND MASTERCLASS

EASL Schools help train the next generation of hepatologists and scientists. Through individual work, collaborative teamwork and discussions with faculty, students gain invaluable insight into new experimental techniques and clinical approaches.

The 2025 EASL-AASLD Masterclass brought together clinical, basic, and translational early-stage scientists from leading academic medical institutions from both sides of the Atlantic in France in a two-day intensive training opportunity.

Management of liver disease in pregnancy

- 20-21 June 2025, London, United Kingdom, 23 students from 13 countries
- Organisers: Catherine Williamson, Melanie Nana

Liver critical care and liver failure

- 20-21 June 2025, London, United Kingdom, 25 students from 13 countries
- Organisers: William Bernal, Brian Hogan, Tasneem Pirani

Basic Science School: Advanced immunology of the liver; deep immunophenotyping of liver FNA and resection samples using multi-modal techniques

- 27-28 June 2025, Oxford, United Kingdom, 25 students from 12 countries
- Organisers: Eleanor Barnes, Paul Klenerman, Emma Culver, Tamsin Cargill, Rory Peters

EASL-AASLD Masterclass 2025

- 4 – 6 Dec 2025, Élincourt-Sainte-Marguerite, France 25 students from EASL and AASLD
- Organisers: Mattias Mandorfer, Sabela Lens, Saul Karpen, Michael Lucey



EASL MENTORSHIP PROGRAMME

The EASL Mentorship Programme guides young scientists and clinicians through a crucial stage in their career path by encouraging scientific exchange and fostering personal developmental relationships with a more experienced and knowledgeable hepatologist or senior scientist. In 2025, this initiative brought together four mentor - mentee pairs.



Antonio Liguori



Sven Francque



Katharina Hupa-Breier



Shira Zelber-Sagi



Laurens Van Kleef



Jörn Schattenberg



Trenton White



Loreta Kondili

EASL FELLOWSHIP PROGRAMME

The EASL Mobility and Research Fellowship Programme supports early to mid career professionals through six month fellowships designed to enhance skills, foster collaboration and advance liver research across Europe. Mobility Fellowships promote exchange between institutions, particularly involving Inclusiveness Target Countries, enabling fellows to gain specialised expertise and build international networks, while Research Fellowships support focused projects at the home institution, strengthening scientific output and research competencies. In 2025, six fellowships were awarded, each funded up to EUR 25,000, including support to present results at a future EASL Congress.

Research fellowships



Marta Alonso



Claudia Campani



Ahmed El-Masry



Rita Manco

Mobility fellowships



Maria Buzias



Lukas Hartl

EASL Daniel Alagille Award 2025

The Daniel Alagille Award is given to a promising, young scientist, exploring the frontiers of paediatric or adult genetic cholestatic diseases. The award is supported by Theravia.



Barbora Smolkova

Advocacy

EASL's advocacy initiatives are focused on elevating the standards of hepatology care and access for patients, driving public health policy change, and augmenting public awareness about liver diseases. These efforts encompass a variety of activities, each targeting specific aspects of liver health advocacy and public education.



EASL POLICY DIALOGUES

EASL Policy Dialogues discuss policy issues related to liver health, combining scientific and policy perspectives from experts. This initiative raises awareness of EASL's advocacy priorities and engages various stakeholders.

EASL - LANCET COMMISSION

In 2021, the first EASL–Lancet Commission addressed the rising burden of liver disease in Europe, proposing ten evidence based recommendations to shift from end stage care to prevention and health promotion. Building on this, the second EASL–Lancet Commission, launched in 2023, focuses on implementing these recommendations, addressing structural challenges, and tracking progress to improve liver health across Europe. This work culminated in the publication of its second report in 2026, *From Evidence to Impact: Implementing Sustainable Liver Health in Europe*, which highlights the urgent and growing burden of liver disease and calls for coordinated policy action to integrate liver health into broader noncommunicable disease strategies.

HEALTHY LIVERS, HEALTHY LIVES COALITION

EASL, along with AASLD, ALEH, APASL, and SOLDA founded this global coalition which facilitates collaboration on global liver health issues, advocating for policy and clinical changes.

GLOBAL LIVER ADVOCACY NETWORK

Launched in 2025 at the EASL Congress, the EASL Global Liver Advocacy Network brings together advocates, healthcare professionals, and organisations worldwide to advance liver health. The initiative fosters collaboration, shares best practices, strengthens advocacy capacity, and supports policy change, creating a unified global effort to raise awareness and drive meaningful impact in the fight against liver disease.

EUROPEAN HEALTH ALLIANCE ON ALCOHOL



Alcohol consumption remains a major public health challenge in the WHO European Region, which has the highest levels globally. Alcohol is responsible for around 800,000 deaths each year, with more than 80 deaths occurring every hour, and contributes significantly to reduced life expectancy, particularly among men. It is a leading risk factor for disability and is linked to over 200 health conditions, including liver disease, cancer, cardiovascular diseases and mental health disorders, as well as broader social harms such as violence and crime.

In response, the European Health Alliance on Alcohol was launched at the EASL Congress 2025, bringing together leading health organisations to strengthen advocacy and amplify the voice of the medical community in policy-making. The Alliance aims to raise awareness of the often underestimated harms of alcohol, challenge persistent misconceptions such as the belief that only heavy drinking is harmful, and promote informed decision-making among the public.

A central priority is the protection of children and young people, who remain particularly vulnerable to alcohol-related harm, from prenatal exposure to early patterns of consumption and targeted marketing. The Alliance calls for stronger regulatory measures, including restrictions on advertising, reduced availability and increased pricing, alongside broader efforts to shift social norms.

While effective, evidence-based policies are well established, their implementation across Europe remains limited. Examples such as Lithuania demonstrate that comprehensive policy action can rapidly reduce consumption and save lives. The Alliance will therefore focus on supporting the adoption of proven measures and reinforcing the role of healthcare professionals in prevention, early identification and intervention.

Ultimately, the Alliance highlights that alcohol-related harm is not inevitable but preventable through coordinated action, stronger policies and a shared commitment across healthcare systems and society.

EASL LOVE YOUR LIVER

Love your Liver was first launched in 2022, aimed at raising awareness for liver health, tailored to local communities hosting EASL Congresses. This initiative strives to promote early detection and care, and build local professional capacities in hepatology.



Love Your Liver unfolded across Amsterdam and other Dutch cities during the EASL congress and throughout May. 330 schoolchildren participated in interactive sessions with hepatologists to learn about the importance of liver health across 9 schools.

Love Your Liver was recognised by more than 20 media outlets throughout The Netherlands, including features on national TV during EASL Congress 2025, with 845 people screened with Fibroscan: the largest crowd turnout in the project's history.





WORLD LIVER DAY

Taking place every 19 April, this initiative for the general public focuses on raising awareness on liver diseases, aiming to promote prevention, enhance screening strategies, and improve access to treatment. worldliverday.org



In 2025 the campaign reached all continents, and individuals, hospitals, research centres, patient organisations, EU-funded projects, Consortia, universities, and industry posted on social media, carried out screening, testing and nutrition awareness, campaigns, held lectures and webinars, spread vaccination calls to action, and walked or exercised for liver health. The campaign was featured on national and local media outlets across the world.



EASL PATIENT SYNERGIES

EASL actively collaborates with 10 patient organisations, building strong partnerships to amplify the voices of those affected by liver diseases. Together, we raise awareness, advocate for better healthcare policies, and promote initiatives that improve liver health and support for patients and their families across Europe.



EASL EU-FUNDED PROJECTS

EASL supports the dissemination and exploitation work package for several Horizon-Europe and Horizon-2020 projects.



EASL POLICY STATEMENTS

EASL’s policy statements address key challenges in liver health, offering evidence-based recommendations to guide policymakers and stakeholders. These documents aim to influence healthcare policies, prioritise liver disease prevention, and improve access to diagnosis and treatment.



In 2025, EASL published a policy statement on ending stigma and discrimination.

Read all policy statements on: <https://easl.eu/publications/easl-policy-statements/>

S

Science

EASL provides an efficient and highly respected environment for scientific information, communication and knowledge-exchange in the field of the study of the liver. It builds links between stakeholders, pushes scientific frontiers and raises the standards for professionalism, networking, dedication and innovation.



Journal of Hepatology Editorial Board

The Journal of Hepatology is a monthly, English language, peer-reviewed journal. First published in 1985 as the official journal of EASL, it provides an international forum for the publication of original articles, reviews and letters to the Editor describing basic laboratory, translational, and clinical investigations in hepatology.

This year the Journal of Hepatology achieved exceptional results with a 2024 impact factor of 33, solidifying its status as the premier hepatology-only journal.



Vlad Ratzu
Editor-in-Chief



Frank Tacke
Co-Editor



**Heiner
Wedemeyer**
Co-Editor



**Lorenza
Rimassa**
Co-Editor



Phil Newsome
Senior Editor



Tom H. Karlsen
Co-Editor



**Annalisa
Berzigotti**
Co-Editor



JHEP Reports Editorial Board

JHEP Reports is an open-access companion title to the highly-respected Journal of Hepatology. It publishes original papers, reviews, and letters to the Editor concerned with basic, translational, and clinical research in the field of hepatology. JHEP Reports is an innovative journal publishing articles on global issues in hepatology.

JHEP Reports achieved an impressive impact factor of 7.5 in the 2024 release of Journal Citation Reports (JCR) by Clarivate. This notable accomplishment underscores the journal's growing influence and recognition as one of the leading publications in the field of hepatology.



Josep M. Llovet
Editor-in-Chief



Javier Fons
Deputy Editor



Arndt Vogel
Co-Editor



Sophie Lotersztajn
Co-Editor



Jacob George
Co-Editor



Virginia Hernandez-Gea
Co-Editor



EASL CLINICAL PRACTICE GUIDELINES

EASL's Clinical Practice Guidelines assist physicians, healthcare providers, patients and other interested parties in the clinical decision-making process. The EASL Guidelines present a range of state-of-the-art approaches for the diagnosis and treatment of liver diseases.

Six new EASL CPGs were published in 2025.



EASL EASL GUIDELINES APP

The EASL Guidelines App is an indispensable mobile tool that empowers clinicians to bolster clinical decision-making processes, access essential resources conveniently, and continuously expand knowledge.

Featuring calculators and scores, the app aids in assessments and prognostic evaluations, allowing practitioners to derive precise insights and optimise patient management strategies. The EASL Guidelines app also grants access to EASL Clinical Practice Guidelines, ensuring users stay updated on evidence-based recommendations and best practices in hepatology.



EASL SUMMITS

EASL Summits are a series of smaller, focused meetings that occur throughout the year, each dedicated to specific topics within the spectrum of hepatology. These summits, such as the SLD Summit concentrating on Steatotic Liver Disease and the Liver Cancer Summit which delves into liver tumors, provide targeted and in-depth exploration of their respective areas.



EASL Liver Cancer Summit 2025 Paris, France 20-22 February

539 delegates from 48 countries, 151 abstracts

A comprehensive summit that delved into current knowledge and future directions in hepatocellular and cholangiocellular carcinoma, covering advances in pathogenesis, early detection, multidisciplinary therapies, and staging.



...ING REMARKABLE DETECTED IN CEUS



EASL Congress 2025

EASL Congress is the premier event in hepatology, held annually and distinguished as the largest of its kind in Europe. It offers a rich programme of hands-on learning sessions and top level lectures conducted by world-renowned faculty.



EASL Congress 2025
7-10 May Amsterdam,
the Netherlands

DELEGATES

7,725
registrations
from

119
COUNTRIES



119
Oral presentations



2,359
Abstracts submitted



1,764
Posters



Leadership

EASL is a globally recognised community of people committed to improving liver health and research. Speaking as the unified voice of European hepatology, we help shape the healthcare landscape worldwide.



Governing Board

The EASL Governing Board is the leadership body responsible for steering the strategic direction of the association. Committed to advancing liver health worldwide, the Governing Board oversees EASL's activities, ensures alignment with its mission, and upholds the highest standards of governance, transparency, and accountability. The board drives EASL's impact and growth as a global reference in hepatology.

- We express our deepest gratitude to Aleksander Krag, our exiting Secretary General. His dedicated service has greatly contributed to the success of our Governing Board and organisation
- We welcomed Sarwa Darwish Murad as new Scientific Committee Chair, an instrumental position in our Governing Board.



Debbie Shawcross
Secretary General



Ana Lleo
Vice-Secretary



Massimo Pinzani
Treasurer



Sven Francque
Educational
Councillor



Shira Zelber-Sagi
Public Health
Councillor



**Francesco
Paolo Russo**
External Affairs
Councillor



**Sarwa Darwish
Murad**
Scientific
Committee Chair

Tribute to Ahmed El- Sharkawy

“I care deeply about the work EASL does. Being on the Governing Board has helped me give back and make a difference in what we offer the liver community. It’s hard work, but great fun.”

Dr Ahmed Elsharkawy



The EASL community mourns the loss of Dr Ahmed Elsharkawy, consultant transplant hepatologist, researcher, educator, and valued member of the EASL Governing Board. Ahmed served as EASL Internal Affairs Councillor from November 2022 until his passing. During this time, he worked with dedication and integrity to strengthen the organisation and the community he cared so deeply about. He brought clarity of purpose, a strong ethical compass, and the courage to speak openly, becoming a trusted voice in moments of difficult decision making.

He made lasting contributions to EASL, including the establishment of the EASL Community Award, the development of the Mobility and Research Fellowships programme, and the creation of the Equity, Diversity and Inclusion Working Group and its policy. He also led a review of the EASL Code of Conduct and contributed to guiding the organisation through financial challenges following the COVID-19 pandemic.

Professionally, Ahmed was a consultant transplant hepatologist at the Queen Elizabeth Hospital in Birmingham. Over more than two decades, he cared for patients with a wide range of liver diseases and was recognised for his expertise in viral hepatitis and his work in community based care. Alongside his clinical work, he was deeply committed to research, education and mentorship, and contributed widely to the hepatology community in the United Kingdom and internationally.

Ahmed will be remembered for his integrity, honesty and warmth. He was a respected colleague and a dear friend to many, leaving a lasting legacy within EASL and the wider liver community.

Scientific Committee

The Scientific Committee plays a key role in advancing EASL's mission by providing expertise and guidance to ensure rigorous standards in scientific research and programming. It oversees the development and review of scientific content for EASL's events, Clinical Practice guidelines, fellowships and grants supporting innovation and excellence in hepatology.

- We express our gratitude to Eric Trépo, our exiting Scientific Committee Member.
- Nomination and appointment of Emma Culver.



Rui Castro
Portugal



Cyrielle Caussy
France



Emma Culver
United Kingdom



Maja Thiele
Denmark



Sabela Lens
Spain



Matthias Pinter
Austria



Bogdan Procopet
Romania

Educational Committee

The Educational Committee supports EASL’s mission to remain a global leader in liver-related education by offering scientific expertise and strategic guidance. It oversees the development and monitoring of a high-quality educational portfolio aligned with EASL’s educational strategy.

- We express our gratitude to Henning Grønbaek, Krista Rombouts, Rajeshwar Mookerjee, and Verena Keitel our exiting Educational Committee members.
- Nominations and appointment of: Robert de Knecht, Mattias Mandorfer, Anna Mrzljak, and George Papatheodoridis.



Sven Francque
Belgium



Robert de Knecht
the Netherlands



Mattias Mandorfer
Austria



Anna Mrzljak
Croatia



Massimo Iavarone
Italy



Shilpa Cholkshi
United Kingdom



George Papatheodoridis
Greece

Policy, Public Health and Advocacy Committee

The PPHA Committee drives EASL's efforts to influence policy, promote public health, and advocate for improved liver health on a global scale. The committee ensures that liver health remains a priority in public health agendas and fosters meaningful change for patients and communities worldwide.

- We express our gratitude to Loreta Kondili, Frank Murray, and Jörn Schattenberg, our exiting Policy, Public Health, and Advocacy Committee members.
- Nomination and appointment of Bart Takkenberg, Kushala Abeysekera, and Patrizia Carrieri.



Shira Zelber-Sagi

Public Health
Councillor, Israel



José Willemse

the Netherlands



**Mathis
Heydtmann**

Germany



Richard Parker

United Kingdom



**Kushala
Abeysekera**

United Kingdom



Patrizia Carrieri

Italy



Bart Takkenberg

the Netherlands

Ethics & Compliance Committee

The EASL Ethics Committee plays a pivotal role in upholding the highest standards of integrity, transparency, and accountability within the association. It ensures that EASL's policies, practices, and initiatives align with ethical principles, fostering trust and fairness in all our activities and collaborations.

- We express our gratitude to Herbert Tilg, our exiting Ethics & Compliance Committee member.
- Nomination and appointment of Lucia Craxi.



Mark Thursz

United Kingdom



Tom Luedde

Germany



Marina Berenguer

Spain



Valérie Paradis

France



Lucia Craxi

Italy

Young Investigators Task Force

The Young Investigators (YI) Task Force fosters a dynamic community of early-career hepatologists, promoting EASL activities, facilitating knowledge exchange, and organising exclusive events like the YI social at the EASL Congress. It advises the Governing Board on educational initiatives and supports YIs through tailored activities, inspiring the next generation of hepatologists.

- Dedicated YIs Symposium and YI-led workshops at EASL Congress 2025.
- Selection of two recipients of the 2025 Emerging Leader Award: Sivilia Affo and Mattias Mandorfer.



Marta Alonso
Spain



Mads Israelsen
Denmark



Thomas Marjot
United Kingdom



Pedro Rodrigues
Spain



Carolin
Schneider
Germany



Alberto Zanetto
Italy

Nurses and AHPs Task Force

The Nurses and Allied Health Professionals (AHP) Task Force supports the integration and advancement of nurses and AHPs within the EASL community. By organising dedicated sessions and events, and facilitating tailored educational initiatives the task force ensures that nurses and AHPs have a strong voice and role in shaping the future of liver health.

- We express our gratitude to Nuria Fabrellas, our exiting Nurses & AHPs Task Force member.
- We welcomed Maria Hjorth to the task force.
- Full day Nurse & AHP Forum at EASL Congress 2025.
- The Rising Star Award at EASL Congress 2023 was awarded to Thomas Maurel and Sally Tilden. This award aims to recognise excellence in nurses and Allied Health Professionals in hepatology.



Malene Barfod O'Connell

Denmark



Sonja Beckmann

Switzerland



Maria Hjorth

Sweden



Kate Hallsworth

United Kingdom



Gemma Iserte

Spain



Catarina Lindqvist

Sweden



Denise Schäfer

Austria

Basic Science Task Force

The Basic Science (BS) Task Force promotes the vital role of basic and translational research in advancing liver health. It bridges the gap between research and clinical practice by sharing findings with the EASL community and collaborating with clinicians to address unmet needs. The task force also designs dedicated basic science sessions at the EASL Congress.

- We express our gratitude to Pedro Rodrigues, our exiting Basic Science Task Force member.
- We welcomed Pedro Baptista to the task force.



Marta Afonso

Portugal



Jesus Bañales

Spain



Rui Castro

Portugal



Pedro Baptista

Spain



**Krista
Rombouts**

United Kingdom



Saskia van Mil

the Netherlands

Artificial Intelligence (AI) Task Force

The EASL AI Task Force is dedicated to leveraging artificial intelligence to transform hepatology. Comprised of experts, it focuses on advancing research, enhancing education, supporting clinical decision-making, optimising events and journals, fostering industry collaboration, and improving operational efficiency. By harnessing AI responsibly, the task force aims to benefit EASL members, patients, and the wider community.

- The AI Task Force advises the EASL Governing Board in Research, Education, Clinical decision making, EASL events, Journals, and industry collaboration
- We express our gratitude to Thomas Marjot, AI Task Force member.
- We welcomed Mauro Giuffré and Carolin Schneider to the task force.



Julien Calderaro
France



Jakob Kather
Germany



Tom Luedde
Germany



Mauro Giuffré
United States



Raquel Perez-Lopez
Spain



Carolin Schneider
Germany



Ashley Spann
United States



Sabela Lens
Spain

EASL Office 2025

Management & Administration



Ben Hainsworth Laurence Comont Sophie Fux

Finance & Administration



Alexis Vallat Mehdi Boudjani Estelle Pappes

Publications



Joel Walicki Duncan Anderson Sarita Bhattacharya Kristina Jajcevic Pablo Echeverria

Education



Laurent Perrin Elinam Gayi Laura Daguerre Matthias Girod Sofia Damachi Louis Tischhauser

Scientific Programme



Patricia Pochelon Rocio Davina Katerina Katsarou Céline Santo

Policy and Public Health



Irene Mosqueira Maraika Black Kelena Matthews

Events



Carina Schmidt Claire Chombeau Christophe Abetnot

Business Development



Olga Krüger Laudina Asomaning Géraldine Fankhauser Naomi Siguenza

Association and Community Services



Wouter Krujjs Oliver Cole Adonia Dhanjal Chiara Hartmann

EASL fosters a workplace that is as diverse, equitable, and inclusive as it is forward-thinking and environmentally conscious. In 2025, we boast a team of 34 dedicated staff members, of which 23 are female and 11 male. Our team is as varied as it is skilled, representing 16 different nationalities, fluently conversing in 16 languages, with 9 staff members holding scientific doctorates. We have seen a positive impact on our workforce through flexible working hours and the possibility of remote work, boosting productivity and reinforcing the association's dynamism.

Community & Membership

EASL engages globally with all stakeholders in the liver field, regional sister societies, national associations, and related organisations. We encourage the spreading of knowledge and expertise in best practices and the latest scientific breakthroughs in hepatology to all those interested in the liver and its disorders.

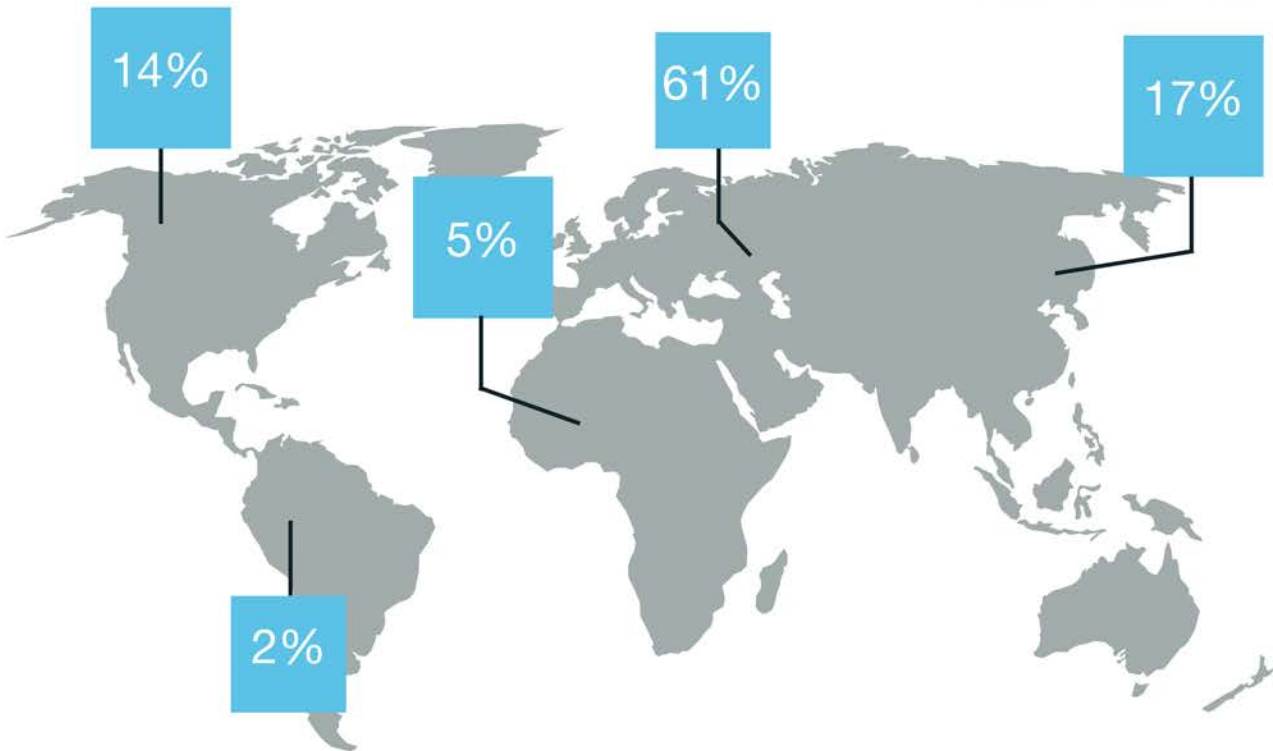


The graphic features the EASL logo at the top left, consisting of a cluster of blue circles and the text 'EASL™ The Home of Hepatology'. Below the logo is an illustration of four interlocking puzzle pieces in shades of blue and grey. The central text reads 'Let's unite hepatology!'. At the bottom left, it says 'Discover your membership benefits!' next to a QR code. A dark blue button at the bottom center contains the text 'Become a member >'.

This year marked another strong period of growth for EASL, with membership surpassing 7,500 in 2025 and our MyEASL Community reaching over 70,580 individuals across 185 countries. Through active participation in international congresses like ALEH, APASL, AASLD, BASL, UCHID, SASLT, and UEG, we continue to strengthen connections with the global hepatology community.

Our inclusive membership model focuses on supporting the next generation of hepatologists, nurses, allied health professionals, and patients — offering reduced fees for trainees and professionals from emerging economies, and free membership for those from resource-limited regions. New benefits include priority access to congress sessions, exclusive content, and easier auto-renewal options.

We are deeply grateful to our members for their continued trust and dedication to advancing hepatology together.

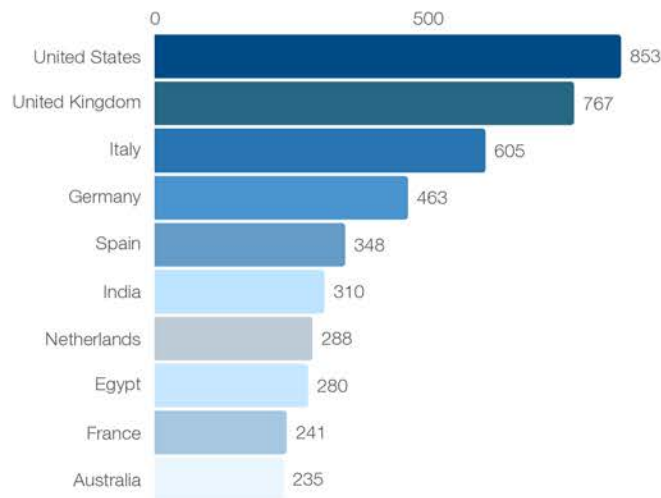


LEADING COUNTRIES IN EASL MEMBERSHIP

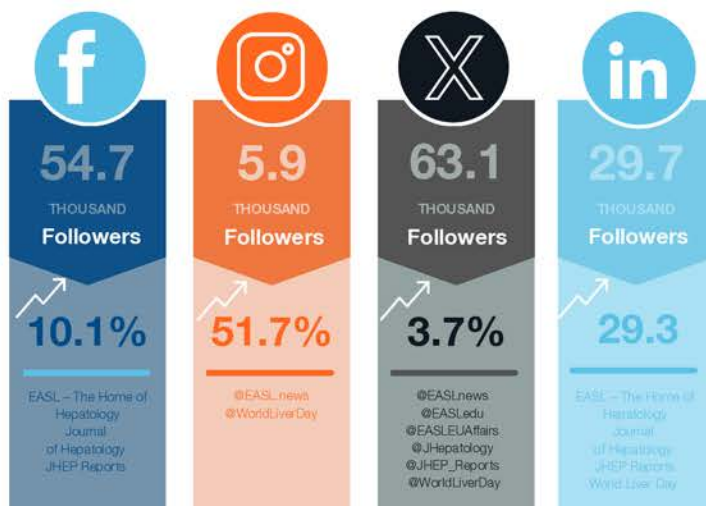
125
countries

7,393
members

37
national
associations



EASL SOCIAL MEDIA METRICS AS OF MARCH 2026



EASL Awards 2025

Each year at the EASL Congress, we honour outstanding individuals whose work has significantly advanced the field of hepatology. From pioneering scientists and clinical experts to rising young investigators and dedicated healthcare professionals, the EASL Awards shine a spotlight on excellence across the liver community. These prestigious honours are presented annually in front of the global liver community—celebrating those who are writing the future of hepatology.



EASL Recognition Awards 2025

The first EASL Recognition Awards were presented at the 41st Annual Meeting in Vienna in 2006. The initial recipients reflected the core aims of the awards: to recognise dedicated scientists who have made meaningful advances in research, clinical care, and education within their area of expertise. Since then, EASL has continued to recognise individuals whose work has contributed to the progress of hepatology.



Ulrich Beuers



Jessica Zucman-Rossi



Ajay Duseja

EASL Community Award 2025

The EASL Community Award recognises individuals who have made outstanding contributions to the liver community. It celebrates excellence across key areas including teaching and mentorship, international advocacy for liver health, innovation, and other impactful contributions that advance the field. Through this award, EASL honours those who strengthen the community, support future generations, and drive meaningful progress in liver disease research and care.



Annalisa Berzigotti

EASL Emerging Leader Awards 2025

The EASL Emerging Leader Award is a yearly award specifically dedicated to young fellows, up to 40 years of age, who are active members of EASL. Every year, two Young Investigator Awardees are elected, based on their international liver research achievements to date.



Silvia Affo



Mattias Mandorfer

EASL Rising Star Award 2025

With this initiative, the task force recognises exceptional liver nurses and AHPs who contribute to service, clinical excellence, leadership, audit, innovation, education, and research.



Thomas Maurel



Sally Tilden

Treasurer's report

Dear members,

2025 marks another very strong financial performance for EASL, confirming the robustness of our operating model and the continued relevance of our activities for the liver health community.

For the second consecutive year, we delivered a high level of operational performance, with an operating result of CHF 1.9 million. This reflects the continued success of our events, combined with sustained development across our educational, policy, advocacy and public health, publishing and community activities. Overall, this demonstrates our ability to consistently deliver high-value products and services while maintaining a sound financial position.

Operating income increased significantly to CHF 13.5 million (2024: CHF 12.2 million), driven by strong performance across key activities, particularly Events, Publishing, and Association and Community Services.

Operating expenses increased in line with the development of activities, reaching CHF 6.8 million (2024: CHF 6.1 million).

For Events, the increase is mainly attributable to the SLD Summit, which resumed in 2025 after an absence in 2024, generating approximately CHF 0.4 million in additional activity reflected in both income and related operational expenses.

In addition, resources allocated to governance were strengthened during the year. This reflects the continued structuring of the organisation, including the increased role of the Management Committee in operational oversight and decision-making, supporting more efficient and coordinated execution across activities. These developments translate into enhanced value and opportunities for our members, through expanded activities, high-quality content and increased engagement.

Personnel expenses increased from CHF 3.6 million to CHF 3.9 million. This reflects primarily a normalisation effect following social insurance reimbursements recorded in 2024, as well as the full-year impact of positions that were only partially in place in the prior year.

The increase was controlled and aligned with the development of our activities, with a broadly stable number of people supporting delivery across the organisation. At the same time, low staff turnover has contributed to increasing seniority, strengthening institutional knowledge, continuity and execution capacity.

In parallel, the organisation has further strengthened its people management framework, with clear objectives set for staff and a structured performance evaluation process aligned with these objectives. Combined with ongoing investment in training, this ensures that the organisation remains fit for purpose and able to support its evolving activities.

Administrative expenses increased to CHF 0.67 million (2024: CHF 0.50 million), mainly in connection with the planned EASL office renovation project. These reflect largely one-off costs associated with the transition, rather than structural increases.

The financial result was impacted by foreign exchange effects, driven by the weakening of the euro against the Swiss franc. This led to a decrease in the value of euro-denominated assets, including cash and financial investments.

These effects are largely unrealised and do not impact our underlying liquidity position. We nevertheless maintain a strong cash position, ensuring a high level of financial flexibility and resilience.

This solid overall performance is also reflected in our level of reserves, which increased significantly to CHF 11.4 million at year-end, representing close to one year of operating expenses.

Considering this position, the Governing Board has initiated the creation of EASL designated funds which empower the GB to make informed, sustainable, longer-term strategic financial planning decisions. These funds are designed as a structured mechanism to allocate part of our reserves to strategic priorities, including Education, Science and Advocacy. They provide greater visibility on the use of financial resources, while preserving flexibility as allocations can be adjusted over time depending on evolving needs and opportunities. This approach allows us to support targeted projects in a controlled and phased manner, while maintaining a prudent and sustainable financial model.

Beyond financial performance, 2025 was also a significant year in terms of governance and financial oversight. For the first time, we undertook a voluntary audit engagement, including a structured review of our internal control system alongside a more in-depth audit of our financial statements. The outcome is very encouraging: it confirms that we are moving in the right direction, with strengthened processes and controls, and financial statements validated by the auditors.

We continue to operate on solid foundations, both in terms of internal organisation and governance. This provides the necessary framework to deliver impactful events aligned with the needs of our community, develop high-quality educational content, and maintain a strong and credible voice in the field of public health advocacy.

In parallel, we continued to invest in our infrastructure, notably through the renovation of our headquarters in Geneva. This project aims to achieve high energy performance standards while improving the sustainability, efficiency and long-term value of our premises.

Overall, our financial situation remains very strong. We combine sustained economic performance, strengthened governance, and a clear strategic direction for the use of our resources. This enables us to continuously enhance the value and opportunities we offer to our members, and positions EASL well to support the hepatology community and advance our mission in the years ahead.

Finally, I would like to stress that this very positive situation reflects a very close and harmonic cooperation of the GB, committees, task forces, and the EASL office, that I personally thank on behalf of the community of EASL members.

Massimo Pinzani
EASL Treasurer



2025 Financial Statements

Pending General Assembly approval

Balance sheet, as of 31 December

Assets		2025	2024
	Note	CHF	CHF
Current assets			
Cash and cash equivalents		3,992,539	1,728,113
Accounts receivables and other receivables	*Note 1	3,621,495	4,140,933
Prepaid expenses and accrued income	*Note 2	1,057,178	824,148
Financial assets - short term		3,146,336	417,532
Total current assets		11,817,548	7,110,726
Non-current assets			
Financial assets - long term		2,058,737	2,952,202
Property, plant and equipment		4,104,056	4,114,092
Intangible assets		76,482	95,639
Total non-current assets		6,239,275	7,161,932
Total assets		18,056,822	14,272,659
Liabilities and reserves			
		CHF	CHF
Current liabilities			
Accounts payable		460,310	374,792
Other short-term liabilities		1,203,972	216,767
Deferred income and accrued expenses	*Note 1	4,543,115	3,040,585
Total current liabilities		6,207,397	3,632,144
Non-current liabilities			
Mortgage loan		-	-
Long-term provisions		370,500	1,341,197
Restricted funds		76,608	109,900
Total non-current liabilities		447,108	1,451,097
Organisational funds			
Designated funds		2,250,000	-
Reserves		9,152,317	9,189,417
Total organisational funds		11,402,317	9,189,417
Total liabilities and reserves		18,056,822	14,272,659

2025 Financial Statements

Profit and loss account

	Note	2025 CHF	2024 CHF
Operating income			
Events		9,949,203	8,983,853
Education		910,982	911,597
Association & Community Services (including membership)		858,165	765,646
Publishing		1,602,527	1,353,937
Policy, Public Health and Advocacy		201,610	189,943
Total operating income		13,522,487	12,204,976
Operating expenses			
Events		-4,960,194	-4,457,137
Education		-224,730	-265,433
Association & Community Services (including membership)		-402,818	-283,361
Publishing		-600,595	-568,417
Policy, Public Health and Advocacy		-151,526	-127,782
Governance		-403,692	-366,102
Scientific Programme		-10,043	-311
Business Development		-12,328	-3,440
Total operating expenses		-6,765,927	-6,071,984
Personnel expenses		-3,920,491	-3,583,115
Administrative expenses			
IT		-277,063	-261,193
Human resources		-86,799	-53,536
Finance		-160,914	-110,850
Administration & office		-142,871	-77,459
Total administrative expenses		-667,647	-503,038
Depreciation and amortisation on property, plant and equipment and intangible assets		-274,346	-275,950
Operating result		1,894,075	1,770,890
Financial result			
Financial expenses		-49,020	-36,071
Financial income		208,917	178,225
Foreign exchange result		-175,946	267,052
Financial result		-16,048	409,205

2025 Financial Statements

Profit and loss account

	Note	2025 CHF	2024 CHF
Non-operating result			
Non-operating income		17,946	20,711
Non-operating expense		-	-
Non-operating result		17,946	20,711
Extraordinary, non-recurring or prior-period expenses			
	*Note 3	-484,112	-117,699
Extraordinary, non-recurring or prior-period income			
	*Note 3	801,038	127,281
Result before change in organisational funds			
		2,212,900	2,210,388
Allocation to designated funds		2,250,000	-
Allocation / (use) of reserves		-37,100	2,210,388
Result after change in organisational funds		-	-

Statement of changes in organisational funds

	12/31/2023	Allocation	Use	Net change	12/31/2024
Reserves	7,085,586	2,210,387	-106,556	2,103,831	9,189,417
Organisational funds	7,085,586	2,210,387	-106,556	2,103,831	9,189,417

The allocation for the year 2024 of CHF 2,210,387 corresponds to the result for the year.

The use for the year 2024 corresponds to the reversal of the currency translation differences arising from the change in functional currency from EUR to CHF on 1 January 2024.

	12/31/2024	Allocation	Use	Net change	12/31/2025
Education fund	-	700,000	-	700,000	700,000
Advocacy fund	-	250,000	-	250,000	250,000
Science fund	-	950,000	-	950,000	950,000
Leadership fund	-	100,000	-	100,000	100,000
ICT fund	-	100,000	-	100,000	100,000
Foreign exchange fund	-	150,000	-	150,000	150,000
Total designated funds	-	2,250,000	-	2,250,000	2,250,000
Reserves	9,189,417	0	37,100	-37,100	9,152,317
Organisational funds	9,189,417	2,250,000	37,100	2,212,900	11,402,317

2025 Financial Statements

Notes to the 2025 financial statements

EASL, the European Association for the Study of the Liver ("EASL"), founded in 1966, registered in Geneva since 2018, is a medical association dedicated to pursuing excellence in liver research, to the clinical practice of liver disorders, and to providing education to all those interested in hepatology. Its vision is to beat liver disease and promote liver health. Its mission is to be the Home of Hepatology for everyone engaged in beating liver diseases and is committed to fostering awareness, prevention and the best possible patient care. This mission is carried out through four strategic pillars: Education, Advocacy, Science, and Leadership.

General principles

General aspects

These annual financial statements were prepared according to the principles of the Swiss Law on Accounting and Financial Reporting (32nd title of the Swiss Code of Obligations). Where not prescribed by law, the significant accounting and valuation principles applied are described below. It should be noted that to ensure the company's going concern, the company may create or release hidden reserves.

Financial assets

Financial assets held on a short-term and long-term basis are measured at their fair value at the balance sheet date. No provision for impairment has been recognised.

Recognition of revenue

The main revenue stream of EASL is sponsorship & registration fees for Events, mostly from EASL Congress, the EASL Liver Cancer Summit and the EASL Steatotic Liver Disease Summit. Revenue related to events is recognised in the financial year in which the event occurs.

EASL generates other revenues from the Education portfolio, the Policy, Public Health and Advocacy portfolio, the Publishing portfolio as well as EASL membership fees.

Membership fees are recognised in the accounting period in which the fees relate to.

Non-current assets and leases

Property, plant, and equipment are valued at purchase cost, less any depreciation required by generally accepted accounting principles. Depreciation is charged on a straight line basis over the useful life of the fixed asset. The assets' residual values and useful lives are reviewed, and adjusted if appropriate, at the end of each reporting period.

Gains and losses on disposals are determined by comparing the proceeds with the carrying amount and are recognised in the income statement.

The useful lives of assets have been determined as follows:

Type of assets	Useful life
Building	30 years
Furniture, fixtures and equipment	10 years
Intangible assets	5 years
Computer & hardware	3 years

Direct taxes

EASL benefits from an exemption on direct taxes for an indefinite period.

2025 Financial Statements

Currency and Presentation Note - 2025

The functional currency is the Swiss franc (CHF), and the accounts are maintained in CHF. The financial statements are prepared using the historical cost convention, and all financial information is presented in CHF.

Operations in foreign currencies are converted as follows:

- Monetary assets and liabilities are translated at the closing exchange rate at the reporting date.
- Transactions during the year are converted at the exchange rate in effect on the transaction date.
- Exchange gains and losses resulting from the settlement of such transactions or from the conversion of monetary items at year-end rates are recognized in the income statement.

Comparative amounts

Certain comparative financial information have been reclassified to conform to the current year's presentation.

Details, analyses, and explanations to the financial statements

The number of full-time equivalents did not exceed 50 on an annual average basis in the current and prior year.

Pension liabilities

On 31 December 2025, as on 31 December 2024, there were none, as payments were done before the end of the year.

Collateral for third-party liabilities

	2025	2024
Guarantee obligations	73,000	68,507

Total amount resulting from the dissolution of replacement reserves and the material dissolution of excess hidden reserves

No hidden reserves were released in the current year and in the prior year.

Subsequent events

There have been no significant events impacting the 2025 annual accounts between the balance sheet date and the date of signing the financial statements.

Fees paid and accrued to the auditor

	2025	2024
Audit services	60,000	29,493

Designated funds

Designated funds represent amounts earmarked by EASL for specific purposes aligned with EASL's mission and strategic objectives. They are internally designated by the Governing Board and do not constitute liabilities towards third parties.

2025 Financial Statements

These funds are intended to support priority areas of EASL's educational, advocacy, scientific and leadership objectives over time. They may be used to finance activities or absorb specific risks, subject to future decisions and actual needs.

As of year-end, designated funds relate to the following areas:

- Education fund: created to support EASL's educational activities and future investment in learning programmes and educational development.
- Advocacy fund: created to support advocacy initiatives and policy-related activities in line with EASL's mission.
- Science fund: created to support research/science-related initiatives.
- Leadership fund: created to support leadership development, notably through fellowships, governance strengthening and related strategic initiatives.
- ICT fund: created to support future investments in information and communication technology, digital tools and infrastructure.
- Foreign exchange fund: created to absorb potential adverse foreign exchange variances.

Note 1:

Accounts receivables and other receivables & deferred income and accrued expenses

As at 31 December 2025, receivables arise from the provision of services. Part of this amount relates to contractual commitments from clients for the Congress, LCS and SLD events scheduled for 2026, which will be recognised as revenue when these events take place.

This amount is mainly due to advance invoicing for the 2026 events.

A similar pattern was observed as at 31 December 2024, with receivables also primarily linked to advance invoicing for upcoming 2025 events (Congress, LCS and SLD).

Note 2:

Prepaid expenses and accrued income

Prepaid expenses relate to payments made during the financial year for services to be received in the following financial years. These amounts are recognised as assets until the service is rendered, at which point they are recognised as expenses in the income statement.

This applies in particular to payments made in 2025 for the Congress, LCS and SLD events scheduled for 2026.

A similar pattern was observed as at 31 December 2024, with prepaid expenses also mainly relating to advance payments for upcoming events (Congress, LCS and SLD).

Note 3:

Explanations of extraordinary, non-recurring or prior-period items in the profit and loss statement

	2025	2024
Extraordinary, non-recurring or prior-period expenses	-484,112	-117,699

In 2025, exceptional expenses include adjustments relating to prior years, mainly concerning correction of historical receivable balances following reconciliation of accounts.

	2025	2024
Extraordinary, non-recurring or prior-period income		
Industry revenue from previous period	801,038	127,281

In 2025, extraordinary, non-recurring or prior-period income mainly relates to:

- release of provisions (CHF 557,531) following a reassessment of risks and exposures
- refund of an unutilised grant from a prior-year project
- other adjustments of prior-period receivable and contractual balances and reimbursements

Our Partners



Our Sponsors





EASL™ The Home of
Hepatology



- | | |
|-------------------------------------------------------------------------------------------------------------------------|---------|
| ● Regular
<i>Individuals located in Europe (WHO definition)</i> | EUR 250 |
| ● Corresponding
<i>Individuals located in non-European countries (WHO definition)</i> | EUR 250 |
| ● Trainees & Postdoc
<i>Up to and including 35 years of age. Proof of age and trainee status required</i> | EUR 50 |
| ● Undergraduate students
<i>Proof of enrolment required</i> | Free |
| ● Nurses & AHPs / Patients
<i>Proof of status required - Except for Patients</i> | EUR 25 |
| ● Emeritus
<i>65+ and EASL members for at least 10 years</i> | EUR 25 |
| ● Emerging economy
<i>Proof of location of the home institution required</i> | EUR 25 |
| ● Resource-limited economy
<i>Proof of location of the home institution required</i> | Free |

Discover your
membership benefits!



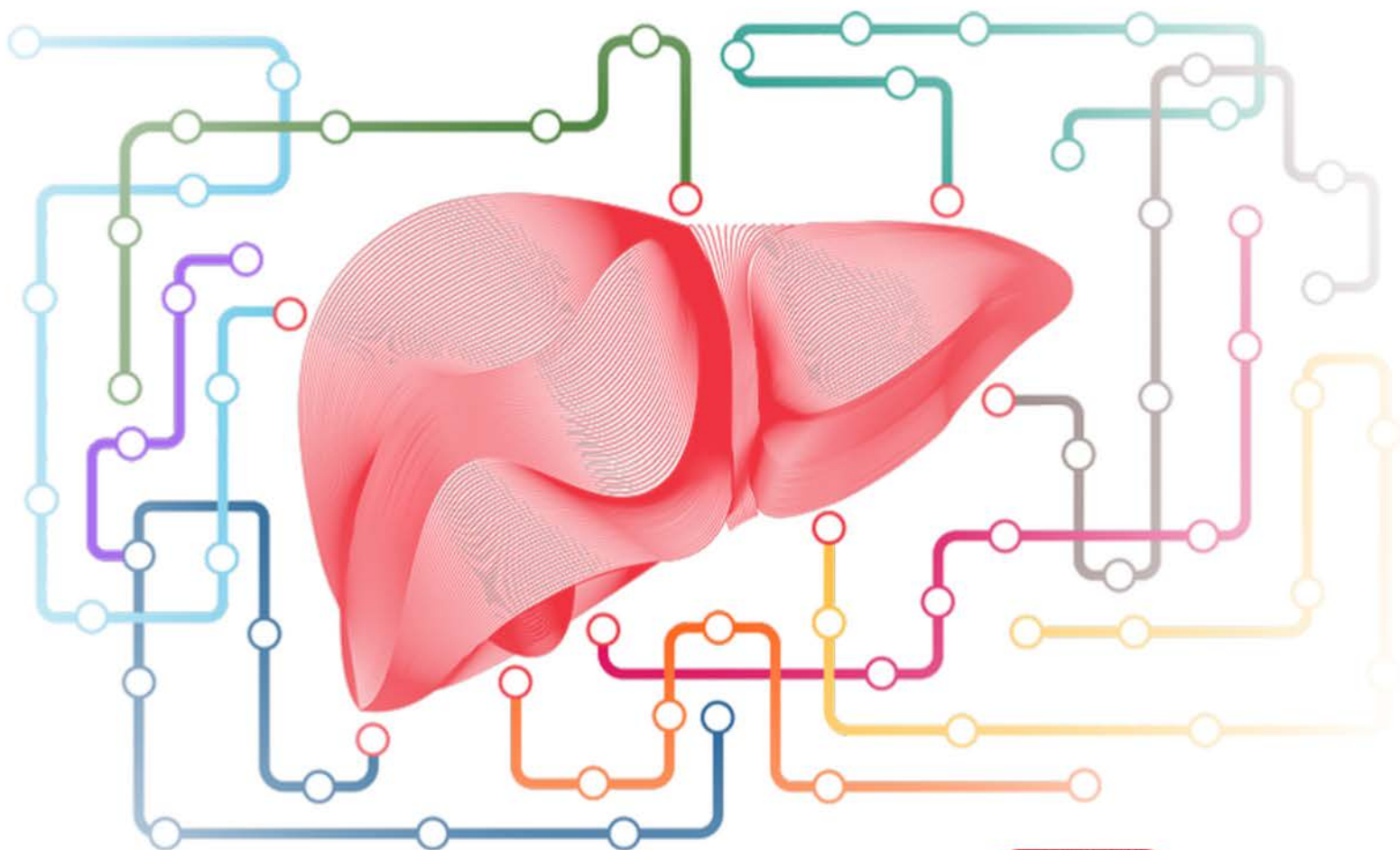
Become a member >





EASL CONGRESS

London United Kingdom
16–19 June 2027



SAVE THE DATE!

#EASLCongress

easlcongress.eu

EASL Office

Home of Hepatology

7 rue Daubin

1203 Geneva

Switzerland

+41(0)22 807 03 60

easlooffice@easlooffice.eu

www.easl.eu

