

# EASL GUIDELINES ACADEMY FLIPPED CLASSROOM MODEL

The EASL Guidelines Academy modules are based on a flipped classroom model (Table 1) that combines online courses/live webinars with face-to-face interaction.

In the flipped classroom model, information transfer is carried out at home (from EASL Campus), and “classroom” time is dedicated to information assimilation. This model is [learner-centred](#), [problem-oriented](#) and encourages [active collaboration between students](#) to elaborate a solution to a given problem.




TRADITIONAL LEARNING MODELS	FLIPPED CLASSROOM MODEL
Teacher-centred	Learner-centred
Content-orientated	Problem-orientated
 Teacher	
Sage on a stage	Guide on the side
 Students	
Passive Learning	Active Learning
Listen to lecture	Assigned pre-reading material
Take notes	Consolidation of information through discussions
Assigned homework	Elaborate solution to given problem
Work mostly alone	Work in a team
 Assessment	
Exam	Task assignment

Table 1 Comparing traditional learning to the flipped classroom model

# THE LEARNING PROCESS

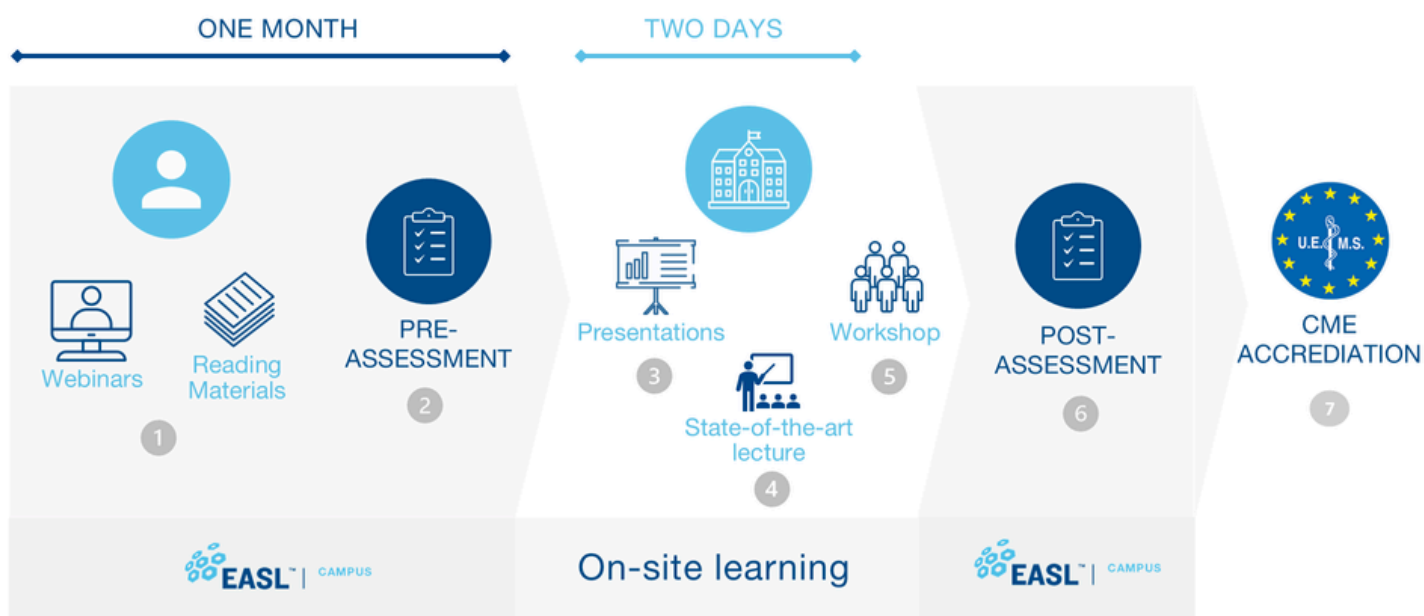


Figure 1 EASL School learning process

## PREPARATION (BLENDED LEARNING ON EASL CAMPUS)

### 1- PRE-READING

- Participants attend an icebreaker webinar.
- Relevant didactic material is provided to all students one month before the school takes place.  
Material may include:
  - EASL CPGs
  - EASL webinars
  - EASL Quiz
  - Key articles
  - On-demand content from previous EASL events
  - Access to selected educational materials on EASL Campus,
  - TED talks
  - Podcasts
  - etc.

### 2- PRE-ASSESSMENT QUIZ

- Participants are asked general questions on the Module's topic in a [multiple-choice question format](#).
- The pre-assessment **must** be completed before attending the Module.

## ON-SITE LEARNING

### 3 – PRESENTATIONS

- Presentations and lectures are delivered by expert faculty (local or external).

### 4 – STATE-OF-THE-ART LECTURE

- State-of-the-art lectures are conducted by a renowned expert followed by a question & answer session with the students.

### 5 – WORKSHOP

- Each Module includes a workshop:
  - Module 1: setting-up a screening programme
  - Module 2: challenging cases in terms of diagnosis and severity assessment
  - Module 3: primary and secondary care approaches/models of care
  - Module 4: advanced diagnostics; challenging cases of advanced disease
  - Module 5: tips and tricks for behavioural change; improving organisation around “metabolic health” in a complex ecosystem

## ASSESSMENT (ON EASL CAMPUS)

### 6 – POST-ASSESSMENT QUIZ

Participants are asked to answer the same multiple-choice questions on the topic of the Module.

### 7 – EVALUATION/SURVEY

In order to obtain CME credits, participants must provide their evaluation of the Module – on format, Faculty, venue, time allotted, dynamic of workshop – by filling an online questionnaire.

## Need more information?



[education@easloffice.eu](mailto:education@easloffice.eu)



Rue Daubin 7, 1203 Genève, Switzerland