

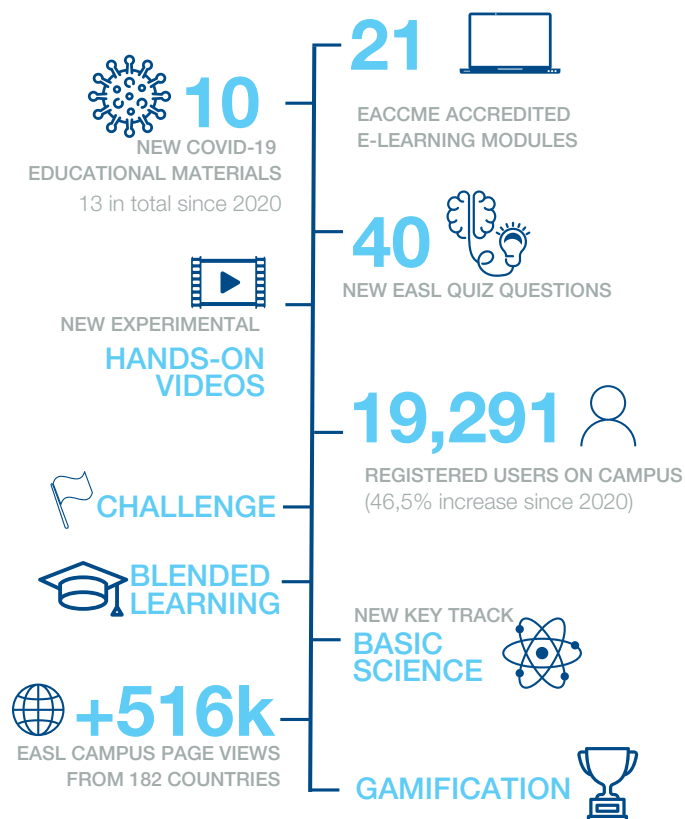


# Education Yearbook 2021



## EDUCATION AT A GLANCE

IN 2021



## EASL Education

In 2019, we launched EASL Campus, EASL's eLearning Hub, to provide leading online education in hepatology. EASL Campus offers a wide range of learner-centric, bite-sized educational content, which can be tailored to multiple, targeted audiences. In addition, blended learning has been implemented on EASL Campus and is now an integral part of the EASL Schools.

The EASL Education Yearbook 2021 highlights the different educational initiatives that EASL offers and collates the available tools for continuous learning.

These tools include:

- **EASL Campus Resources**
  - Conference Webcasts
  - ePosters
  - Slide decks
  - Webinars
  - Podcasts
  - Infographics
  - EASL Quiz series
  - Hands-on videos
- **EASL Schools**
  - Accredited online courses and modules
  - EASL events
  - Research and training grants



EASL eLearning materials are now accredited by the European Accreditation Council for Continuing Medical Education (EACCME), an institution of the European Union of Medical Specialists (UEMS). Each medical specialist should claim only those credits that he/she actually spent in the educational activity.



## 🏠 Table of Contents

### TOPICS

<u>Cirrhosis and Complications</u>	6
<u>General Hepatology</u>	11
<u>Immune-mediated and Cholestatic Diseases</u>	23
<u>Liver Tumours</u>	25
<u>Metabolism, Alcohol and Toxicity</u>	30
<u>Viral Hepatitis</u>	34
<u>Basic Science</u>	38

### ADDITIONAL RESOURCES

<u>COVID-19 Resources</u>	42
<u>Patient Resources</u>	52
<u>Nurses and AHPs</u>	57
<u>The International Liver Congress™</u>	59
<u>Gamification</u>	61
<u>Grants</u>	63

### APPENDIX

<u>Resource Type</u>	65
----------------------	----

# Cirrhosis and Complications

800+ EASL Campus Resources

## Schools

Management of acute-on-chronic liver failure

3-4 SEPTEMBER 2021, FRANKFURT, GERMANY



This clinical course was hosted by the University Clinic Frankfurt and included six parts relating to the management of acute-on-chronic liver failure (ACLF):

- predisposing and precipitating factors
- etiological treatment
- nutrition and hepatic encephalopathy
- infections
- management of organ failure, and
- liver transplantation

Moreover, this course provided hands-on sessions on: Echography/Elastography, ICU-management in skills lab, TIPS live cases, and HE-assessment.





# Cirrhosis and Complications

EASL Education Yearbook – 2021

EASL Education Yearbook – 2021

## EASL Campus

### Congress Resources

#### ILC 2021:

- Takeaways on Cirrhosis and Complications

The EASL Takeaways highlight the most impactful science presented at an EASL congress or summit. Leading experts discuss the latest scientific discoveries and put them into perspective.

- **Best of ILC 2021 slide deck**

EASL has developed and delivered a unique educational offering for its community consisting of didactic slide decks summarising the best of research data presented during the ILC 2021.

### EASL Quiz series

**The EASL Quiz questions on the cirrhosis and complications topic aim at improving the learners' knowledge of the following Clinical Practice Guidelines (CPGs):**

- EASL CPGs on Nutrition in Chronic Liver Disease
- EASL CPGs on the Management of Decompensated Cirrhosis
- EASL CPGs on Hepatic Encephalopathy in Chronic Liver Disease
- EASL CPGs on the Management of Ascites, Spontaneous Bacterial Peritonitis, and Hepatorenal Syndrome in Cirrhosis

## COVID-19 Resources

### Cirrhosis, liver cancer and transplantation:

- Webcast
- eLearning module

For more information about this content, please read our special section dedicated to COVID-19 Resources.

## EASL On-demand Webinars

- **Decompensated Cirrhosis: Disease Trajectory and Pathophysiology**
- **Decompensated Cirrhosis: Management and Liver Transplantation**

Decompensated cirrhosis affects over 10 million people worldwide and is the cause of mortality of about 2 million people yearly. Death rates remain largely unchanged, despite escalating healthcare costs.

The clinical and prognostic models of decompensated cirrhosis have been studied extensively in the past 20 years, leading up to the identification of a newly defined clinical entity: acute-on chronic liver failure.

Emerging data from studies on the pathophysiological basis of decompensated cirrhosis has identified systemic inflammation as being central to the progression of liver disease and mortality.

This new understanding is leading to rapid changes in the



# Cirrhosis and Complications

EASL Education Yearbook – 2021

approaches to the management of cirrhotic patients, design of clinical trials, and selection of patients for early liver transplantation. In recognition of the exciting new developments in the field, EASL and the Journal of Hepatology have published a special Supplement summarising the current literature authored by leaders in the field. These two EASL-sponsored webinars have been designed to allow the authors to critically discuss recent advances in decompensated cirrhosis with the audience.

By watching to these two complementary webinars on-demand, you will be able to:

- Understand the changing epidemiology of cirrhosis
- Learn about new perspectives in the trajectory of cirrhosis and why acute on chronic liver failure should be considered a distinct clinical entity
- Understand the role of systemic inflammation and how this fits into the established pathophysiological mechanisms of decompensated cirrhosis
- Understand how the management of decompensated cirrhosis is changing, the concept of disease modifying agents and issue of working beyond guidelines
- How sarcopenia and frailty impact on outcomes, their assessment and therapeutic approaches
- Exploring nuances in the intensive care management of patients with ACLF and the role of liver transplantation

## General Hepatology 1300+ EASL Campus Resources



## Schools

Progress, pitfalls, and challenges in the management of portal hypertension

19–20 NOVEMBER 2021, BARCELONA, SPAIN



The field of portal hypertension (PHT) faces many current challenges, regarding the variations in the aetiology of cirrhosis. Additionally, an improvement in diagnostic tools and awareness in the medical community have led to an increase in the identification of other aetiologies of portal hypertension, other than cirrhosis, requiring specific approaches. The Barcelona Clinical School on portal hypertension proposed the following programme and activities:

- Epidemiology and aetiology of portal hypertension: Is there a world beyond cirrhosis?
- HVPG measurement: How and when?
- Non-invasive evaluation of portal hypertension: Does it help?

- Update on the pharmacological and endoscopic management of portal hypertension
- Novel endovascular techniques: Always the last step?
- Precision medicine in portal hypertension: Are we there yet?

Rare Liver Diseases: Improving diagnosis and care

22–23 OCTOBER 2021, HAMBURG, GERMANY



Rare liver diseases are of increasing importance and contribute to a considerable proportion of the workload of hepatology, especially in tertiary care centres. Care for rare liver diseases, like other liver diseases, can only be provided with sufficient background knowledge and experience. This is difficult to acquire in daily practice, due to the relative infrequency of rare diseases.

The School for Rare Liver Diseases aimed at improving clinical knowledge for both paediatric and adult hepatologists, addressing issues of transitional care, in

# General Hepatology

EASL Education Yearbook – 2021

particular, such as when paediatric liver transplant recipients become adults. In addition, organisational issues such as referral centres and the opportunities and chances through the new European Reference Network, ERN RARE-LIVER, will be discussed.

## School of Pathology

15–16 OCTOBER 2021, AMSTERDAM, NETHERLANDS



The role of liver biopsy in inflammatory liver diseases has undergone major changes over the past decades. Clinical tests, non-invasive techniques, and imaging have improved.

Since the indication for liver biopsies has changed, the number of liver biopsies in certain indications, like in viral hepatitis, has decreased, however for many liver diseases, such as NAFLD or autoimmune hepatitis, liver biopsy still represents the gold standard.



EASL Education Yearbook – 2021

When a liver biopsy is considered for diagnostic purposes, the major question is the benefit of the information the biopsy reveals, including the added value of the biopsy for the different diseases versus using non-invasive tests. These considerations are the main focus of this EASL School.

The participants were invited to grade and stage different liver diseases, and to discuss the relevant scoring systems. Each disease was tackled from both a clinical point of view and from the perspective of the pathologist, focussing on criteria for diagnosis and possible pitfalls. The interaction between these partners is key, through this course and in daily practice.





## Conferences and Meetings

### Bleeding, thrombosis, and vascular liver diseases

**7–9 OCTOBER 2021, GENEVA, SWITZERLAND**

Liver disease is associated with haemostatic alterations that may lead to both bleeding and thrombotic complications that are an important cause of morbidity and mortality. This EASL–VALDIG meeting focused on the pathogenesis and management of patients with haemostatic alterations.

Special interest was paid to multidisciplinary management and identification of future areas of research. The programme outlined the current and newly generated evidence regarding haemostatic alterations, in relation to thrombosis and bleeding complications in patients with liver disease.

The programme covered the main areas of interest such as management of haemostatic alterations in patients undergoing invasive procedures and treatment of portal vein thrombosis (PVT) in liver transplant candidates. A part of the programme was dedicated to reviewing the new data generated in the field of vascular liver diseases.

To highlight the importance of the multidisciplinary management and the strong need to perform collaborative studies, a mix of speakers, from different clinical and scientific backgrounds, patient organisations, and European policy officers were present. Moreover, we revised and compared the available guidelines on haemostasis in patients with liver disease.

#### Learning objectives:

- Update on the mechanisms leading to PVT and its optimal clinical treatment
- Management of haemostasis in patients undergoing invasive procedures
- Discussion of new evidence generated in the field of vascular liver diseases
- Awareness of the controversies regarding management of thrombocytopenia
- Detailed knowledge of the current scientific guidelines on haemostasis in liver disease





# General Hepatology

EASL Education Yearbook – 2021

EASL Education Yearbook – 2021

## EASL Campus

### Congress Resources

#### **Bleeding, thrombosis, and vascular liver diseases:**

- 55 congress webcasts
- 33 ePosters

#### **ILC 2021:**

- Takeaways on Public Health
- Best of ILC 2021 slide deck

### EASL Clinical Practice Guidelines (CPGs)

#### **Non-Invasive Tests for Evaluation of Liver Disease Severity and Prognosis - 2021 Update.**

### eLearning Course

#### **EASL-ESPEN Nutrition in liver disease**

EASL-ESPEN course provides up-to-date knowledge and best practice guidance on the assessment and management of nutrition in liver disease. Comprising five modules, the course is presented by Europe's leading experts in nutrition and liver disease. It begins with an introduction to the concept of malnutrition and overnutrition in liver disease, before discussing through key assessments, recommended tools, and the incorporation of exercise into a treatment programme. Each module is standalone, so that the learners can pick and choose according to their interests and watch at their

own pace.

### EASL CPGs derived content

#### **Slide Deck: EASL Clinical Practice Guidelines - Non-Invasive Tests for Evaluation of Liver Disease Severity and Prognosis - 2021 Update**

#### **eLearning module: EASL Clinical Practice Guidelines - Non-Invasive Tests for Evaluation of Liver Disease Severity and Prognosis - 2021 Update**

This online module is based on the EASL CPGs on non-invasive tests for evaluation of liver disease severity and prognosis - 2021 update and is providing case-based learning for improved continuing medical education and performance.

#### **eLearning module: EASL Clinical Practice Guidelines - Liver transplantation**

This online module is based on the EASL CPGs on liver transplantation and is providing case-based learning for improved continuing medical education and performance.

### EASL Quiz series

The EASL Quiz questions on the general hepatology topic aim at improving the learners' knowledge of the following CPGs:

- EASL CPGs on Non-Invasive Tests for Evaluation of Liver Disease Severity and Prognosis - 2021 Update.



# General Hepatology

EASL Education Yearbook – 2021

- EASL CPGs on Occupational Liver Disease
- EASL CPGs on Nutrition on Chronic Liver Disease
- EASL CPGs on Acute Liver Failure
- EASL CPGs on Prevention, Diagnosis and Treatment of Gallstones
- EASL CPGs on Liver Transplantation
- EASL CPGs on Vascular Diseases of the Liver
- EASL CPGs on Non-Invasive Tests for Evaluation of Liver Disease Severity and Prognosis
- EASL CPGs on Management of Wilson's Disease
- EASL CPGs on Management of HFE Hemochromatosis

Special edition EASL Quiz on rare liver diseases.

## COVID-19 Resources

### Diagnostics of SARS-CoV-2:

- Webcast
- eLearning module

### COVID-19 vaccination in patients with liver disease:

- On-demand Webinar
- eLearning module

For more information about these contents, please read our section dedicated to COVID-19 Resources



EASL Education Yearbook – 2021

## EASL YI Afterwork series: Live(r) Webinar on Career Development

The EASL Young Investigators Task Force presents its début webinar of the “EASL YI Afterwork Series”. This webinar on career development is chaired by two EASL YI Task Force members: Sabela Lens and Anna Saborowski. Guadalupe Garcia-Tsao provides tips on how to prepare a sparkling presentation the International Liver Congress™ (ILC).

Next follows Frank Tacke's advice on how to get your publication accepted in the Journal of Hepatology. Jesús Bañales concludes by sharing his experience of launching his own lab. A 30-minute Q&A Session addressing questions to the faculty ends this webinar.

## EASL-*Lancet* Commission

### On-demand Webinar: Protecting the next generation of Europeans against liver disease complications and premature mortality

This official launch marks the publication of the report of the EASL-*Lancet* Liver Commission: Protecting the next generation of Europeans against liver disease complications and premature mortality.

This prestigious event is a culmination of many years of collaboration together, with a new momentum toward its solid implementation. The discussion brought together

# General Hepatology

EASL Education Yearbook– 2021

commissioners (contributors to the report), other high-level actors and experts from the European institutions, and patient representatives. Key topics of the report were discussed, as well as how the European Union policy and funding initiatives can support both the recommendations and application of good practices throughout the EU.

The goal of saving the lives of almost 300,000 people per year across Europe is what is driving this initiative. Policy actions for marketing, pricing, and taxation of alcohol and unhealthy foods are of paramount importance with an ability to reduce premature morbidity and save these hundreds of thousands of lives per year across the region.

## EASL Studio

### **The EASL-Lancet Liver Commission**

In this episode of the EASL Studio, the experts tackled the EASL – *Lancet* Liver Commission on liver diseases in Europe. How do we reduce inequity in Europe? How do we improve awareness and education? How can we put a stop to stigmatisation of patients with liver diseases?

### **The AASLD Liver Meeting**

This EASL Studio shined the spotlight on news straight from the AASLD Liver Meeting. Watch the transatlantic discussion on key emerging concepts and the presentations that kept our experts on the edge of their seats.

# Immune-Mediated and Cholestatic Diseases

## 300+ EASL Campus Resources



# Immune-mediated & Cholestatic Diseases

EASL Education Yearbook– 2021

## EASL Campus

### Congress Resources

#### ILC 2021:

- Takeaways on Immune-mediated, Cholestatic and Genetic Liver Diseases
- Best of ILC 2021 slide deck

### EASL Quiz series

The EASL Quiz questions on the immune-mediated and cholestatic diseases topic aim at improving the learners' knowledge of the following CPGs:

- EASL CPGs on the Role of Endoscopy in Primary Sclerosing Cholangitis
- EASL CPGs on Primary Biliary Cholangitis
- EASL CPGs on Autoimmune Hepatitis
- EASL CPGs on the Management of Cholestatic Liver Disease

## Liver Tumours

### 900+ EASL Campus Resources



## Conferences and Meetings

### Digital Liver Cancer Summit 2021

**5–6 FEBRUARY 2021**

Fighting liver cancer, affecting vast numbers of people worldwide, remains a burning priority. The Digital Liver Cancer Summit 2021 is at the forefront of research, development, and strategies for treating patients and provided the absolute latest on basic, translational, and clinical data – including on hepatocellular carcinoma, cholangiocarcinoma, and rare primary liver cancers.

### EASL – AASLD HCC Endpoints

**28–29 OCTOBER 2021, DIGITAL EDITION**

The EASL–AASLD HCC Endpoints meeting on clinical trial design and endpoints in hepatocellular carcinoma (HCC), took place as a virtual meeting.

Despite recent advances in the medical management of HCC, it still remains a major healthcare problem. HCC prevention, early detection, and clinical management are challenging in a space where scientific advances are occurring at a rapid pace.

This joint meeting between EASL and AASLD discussed current trends in prevention, risk stratification, and local and systemic treatments for HCC.

It emphasised topics related to the role of the immune system in carcinogenesis and treatment of HCC. It valued the growing role of patient-reported outcomes on trial design and treatment decisions.

The event also explored how to incorporate molecular markers in treatment decision for HCC patients. We discussed how these changes have impacted clinical trial design and endpoints in HCC research.

#### Learning objectives for the event

- understand the singularities of clinical trial design in HCC, given underlying liver disease
- become familiar with the different clinical endpoints being used in clinical research, including their pros and cons
- learning about the current and emerging trends on prevention, risk stratification, and treatment of HCC

## EASL Campus

### Congress Resources

#### Digital Liver Cancer Summit 2021:

- 67 congress webcasts
- 112 ePosters
- Takeaways
- Best of Digital Liver Cancer Summit 2021 slide deck



# Liver Tumours

EASL Education Yearbook – 2021

EASL Education Yearbook – 2021

## EASL Campus

### Congress Resources

#### EASL-AASLD HCC Endpoints:

- 20 congress webcasts

#### ILC 2021:

- Takeaways on Liver Tumours
- Best of ILC 2021 slide deck

## EASL Quiz series

The EASL Quiz questions on the liver tumours topic aim at improving the learners' knowledge of the following CPGs:

- EASL CPGs on Hepatocellular Carcinoma
- EASL CPGs on the Management of Benign Liver Tumours
- EASL-EORTC CPGs on the Management of Hepatocellular Carcinoma

## COVID-19 Resources

### Cirrhosis, liver cancer and transplantation:

- Webcast
- eLearning module

For more information about this content, please read our section dedicated to COVID-19 Resources.

## EASL Studio

### Liver Cancer Awareness Month

In this episode of the EASL Studio, the experts discussion revolved around Liver Cancer Awareness Month.



# Metabolism, Alcohol and Toxicity

## 1200+ EASL Campus Resources

## Conferences and Meetings

### Digital NAFLD Summit 2021

**16–17 SEPTEMBER 2021**

This highly informative meeting provides the latest research on NAFLD and NASH presented by top international experts and focuses on research advances that will shape the clinical practices of the future.

## EASL Campus

### Congress Resources

#### Digital NAFLD Summit 2021:

- 47 congress webcasts
- 93 ePosters
- Best of Digital NAFLD Summit 2021 slide deck

#### ILC 2021:

- Takeaways on Metabolism, Alcohol and Toxicity
- Best of ILC 2021 slide deck

### eLearning Course

#### Post Graduate Course 2021: Lifestyle and the Liver - Online course

The liver is an organ particularly sensitive to lifestyles. The surge in non-alcoholic fatty liver disease in the last decades is a paramount example of this sensitivity. During the International Liver Congress™ 2021, the Postgraduate Course (PGC) covered how unhealthy lifestyles affect the liver and how behavioural intervention such as regular physical activity and nutritional changes can mitigate liver diseases.



# Metabolism, Alcohol and Toxicity

EASL Education Yearbook – 2021

We provided updates on non-alcoholic fatty liver disease, as well as on alcohol-related liver disease. Because the misuse of over-the-counter analgesics and herbal and dietary supplement products, including illicit hormonal compounds, is an emerging cause of liver disease worldwide, it is a growing source of concern. This postgraduate course addresses the potential harm of unsupervised use of drugs and other non-prescribed agents.

We hope you will enjoy this course and that you will find it informative and useful for your hepatology practice.

## Learning objectives:

- Recognise the importance of lifestyle in the development of major liver diseases and liver-related mortality
- Understand the importance of dietary regulation in the management of non-alcoholic fatty liver disease
- Balance the impact of lifestyle management, drug therapy, and bariatric approaches to the treatment of non-alcoholic fatty liver disease
- Promote the practice of physical exercise in patients with liver disease
- Understand how to manage alcohol-related liver diseases and alcohol use disorder
- Recognise the hepatotoxicity risks associated with non-conventional medicines and over-the-counter remedies



EASL Education Yearbook – 2021

## EASL CPGs derived content

### **eLearning module: EASL Clinical Practice Guidelines: Management of alcohol-related liver disease**

This online module is based on the EASL Clinical Practice Guidelines (CPGs) on the management of alcohol-related liver disease and is providing case based learning for improved continuing medical education and performance.

## EASL Quiz series

The EASL Quiz questions on the metabolism, alcohol and toxicity topic aim at improving the learners' knowledge of the following CPGs:

- EASL CPGs on Drug-Induced Liver Injury
- EASL CPGs on the Management of Alcohol-Related Liver Disease
- EASL CPGs on NAFLD Management
- EASL CPGs on the Management of Alcoholic Liver Disease

## COVID-19 Resources

### **Obesity and fatty liver:**

- Webcast
- eLearning module

For more information about this content, please read our section dedicated to COVID-19 Resources.

# Viral Hepatitis

1,200+ EASL Campus  
Resources

## Clinical Practice Guidelines (CPGs)

EASL's Clinical Practice Guidelines assist physicians, healthcare providers, patients, and other interested parties in the clinical decision making process. The EASL Guidelines present a range of state-of-the-art approaches for the diagnosis and treatment of liver diseases.

**EASL Recommendations on Treatment of Hepatitis C:  
Final Update of the Series, 2020**

## EASL Campus

### Congress Resources

#### ILC 2021:

- Takeaways on Viral Hepatitis
- Best of ILC 2021 slide deck

### EASL CPGs derived content

#### **EASL Recommendations on Treatment of Hepatitis C Webinar**

This online live event took place on 26 January 2021 with worldwide experts presenting and discussing the latest recommendations to treat hepatitis C. A recording of this webinar is available on demand.



# Viral Hepatitis

EASL Education Yearbook – 2021

## **eLearning modules: EASL Recommendations on Treatment of Hepatitis C**

### **• Module 1: On-demand webinar**

In order to measure learner engagement, pre- and post-assessment tests have been created and packed into an online module for this webinar on-demand. A certificate of completion is available at the end of the module.

### **• Module 2: Publications and Quiz**

The following online module is based on the EASL Recommendations on Treatment of Hepatitis C 2018 and 2020 and is providing case-based learning for improved continuing medical education and performance.

## **EASL Recommendations on Treatment of Hepatitis C slide deck**

## **EASL Quiz series**

The EASL Quiz questions on the viral hepatitis topic aim at improving the learners' knowledge of the following CPGs:

- EASL Recommendations on Treatment of Hepatitis C: Final Update of the Series
- EASL CPGs on Hepatitis E Virus Infection
- EASL Recommendations on Treatment of Hepatitis C
- EASL CPGs on Hepatitis B
- EASL CPGs on the Management of Hepatitis C Virus Infection

EASL Education Yearbook – 2021

- EASL CPGs on the Management of Chronic Hepatitis B

## **COVID-19 Resources**

### **Update on the molecular virology and pathogenesis of SARS-CoV-2 and COVID-19 webcast**

### **Viral hepatitis elimination:**

- Webcast
- eLearning module

For more information about this content, please read our section dedicated to COVID-19 Resources.





# Basic Science

## 350+ EASL Campus Resources

## EASL Campus

### Congress Resources

#### ILC 2021:

- Takeaways on Basic Science
- Best of ILC 2021 slide deck

EASL has announced that as of ILC 2021 onwards, there will be a complete Basic Science track, covering updates on basic liver biology, such as development, circadian rhythm, organ-on-chip in-vitro models, and liver tissue engineering. This track runs alongside basic science seminars on the mechanisms of liver disease and treatment targets.

Meetings and sessions are organised to facilitate interaction among clinical and basic scientists. In addition, as is the tradition of our flagship congress, ILC 2021 covered the latest updates on basic liver disease mechanisms and treatment targets for different liver diseases. Learn about their influence on the field of hepatology in two Meet-the-Expert sessions.



# Basic Science

EASL Education Yearbook– 2021

## Key topics addressed:

- Updates on basic liver biology: development, circadian rhythm, organ-on-chip in-vitro models, and tissue engineering
- Updates on basic liver disease mechanisms and treatment targets
- A special focus on two of the 2020 Nobel Prizes: hepatitis and CRISPR/Cas9

## Basic Techniques in Experimental Hepatology at a Glance

“Basic techniques in experimental hepatology at a glance” is a new educational offering illustrating scientific video protocols in the fields of hepatology and liver-related research. These videos allow for the visualization of different steps, materials and equipment, helping scientists and researchers in their experiments.

### • Establishing organoids from patient-derived tissues

In this hands-on video produced by EURO-CHOLANGIO-NET (COST Action CA18122) and ENS-CCA in the context of their EASL endorsed School: Models for cholangiocarcinoma: from ex vivo patient-derived organoids to in vivo animal models (11-12 March 2021), you will learn how to establish organoids from patient-derived tissues.

# ADDITIONAL RESOURCES



# COVID-19 Resources

## 30+ EASL Campus Resources

In the context of SARS-CoV-2 (COVID-19) outbreak and the resulting world pandemic, EASL launched in 2020 a series of COVID-19 webcasts, live webinars, position papers, and didactic slide decks, involving world renowned scientists and clinicians. EASL also addressed patients and patient organisations by producing didactic educational materials, including podcasts and infographics. The resulting engagement from the audience and the new available data on COVID-19 has prompted EASL to release new episodes in 2021, aiming at providing the community with up-to-date, high quality scientific content.

Thirty-minute webcasts, an audio podcast, and a live webinar have been produced, with leading experts discussing the most recent scientific data available to better understand the current situation of the pandemic and its impact on patients with liver disease.

## EASL Campus

### COVID-19 Webcast series

- **Update on the molecular virology and pathogenesis of SARS-CoV-2 and COVID-19**



# COVID-19 Resources

EASL Education Yearbook – 2021

In the rapidly developing field of COVID-19 virology, this webcast provides an update to our current understanding of SARS-CoV-2 infection, and looks at the major challenges that lie ahead.

Although multiple vaccines have now been approved, one of the most important ongoing complications of the SARS-CoV-2 pandemic will be to monitor and adapt to the emergence of new variants.

In this webcast, the experts explore current understanding of coronavirus evolution, which can lead to antigenic drift and the potential for immune escape, and discuss the possible implications for transmission and human health. Looking at the clinical characteristics of SARS-CoV-2 infection, the experts also discuss ongoing progress in the use of antiviral therapy, the evidence around SARS-CoV-2 infection in hepatocytes and liver injury, and special considerations in immunosuppressed patients.

## • Diagnostics of SARS-CoV-2

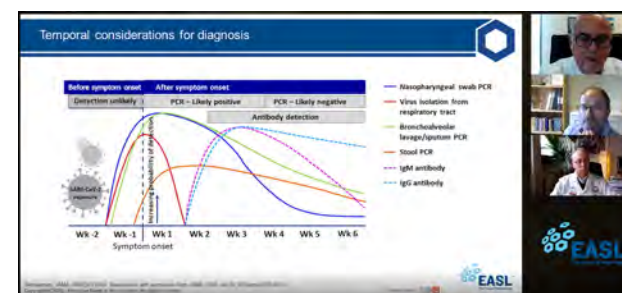
The ability to detect and trace SARS-CoV-2 throughout the population is fundamental to the success of any COVID-19 management strategy, but the different tests available have advantages and disadvantages with crucial implications for how screening programmes are managed and administered.

EASL Education Yearbook – 2021

In this webcast, three world-renowned experts, discuss the current state of COVID-19 diagnostics. Opening with an explanation of virological markers and their development over the course of infection, and the capabilities of different testing modalities, the experts discuss key challenges such as reliability and limited sensitivity in asymptomatic patients, and the practicalities of evaluating diagnostic tools in real-world use.

In doing so, the experts evaluate how current diagnostic capabilities can be best used to establish risk, identify disease in individuals and to track the spread of SARS-CoV-2 within the population.

An eLearning module is available with pre- and post-assessment tests allowing learners to obtain a certificate of completion.





# COVID-19 Resources

EASL Education Yearbook – 2021

## • Cirrhosis, liver cancer and transplantation

This webcast provides discussion on COVID-19, cirrhosis, liver cancer and transplantation, each topic presented in an independent webcast.

Part 1 focuses on how COVID-19 impacts people with liver cirrhosis, with presentation of published data on the outcomes for patients with chronic liver disease or autoimmune hepatitis who contract COVID-19. The faculty then discuss a range of questions arising from the data, such as: are patients with compensated cirrhosis at increased risk of mortality from COVID-19; can the virus trigger acute decompensation; how do decompensated cirrhosis and respiratory failure contribute to mortality in these patients; how will patients with liver disease be cared for in the current wave; and what is the effect of immunosuppression on prognosis?

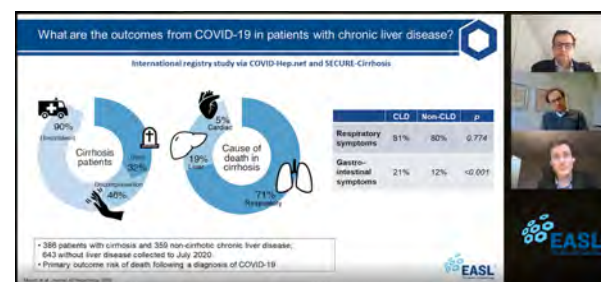
Part 2 addresses how COVID-19 has impacted liver transplantation. The webcast starts with the presentation of international data on organ transplantation trends and morbidity/mortality outcomes in liver transplant patients with COVID-19 compared with the general population.

EASL Education Yearbook – 2021

The faculty then discuss a range of questions, such as: how does cirrhosis-related immune dysfunction affect disease outcomes; how should COVID-19 affected patients with cirrhosis be prioritised; how should immunosuppression be managed in patients with cirrhosis and COVID-19; and how can healthcare systems change to ensure that transplants can continue during the pandemic?

Part 3 looks at how COVID-19 has impacted surveillance and treatment for hepatocellular carcinoma (HCC) in patients. The faculty presents international data then discuss a range of questions arising from the data, such as: what factors contribute to patient willingness to continue with surveillance; what is the role of nurses in this process; and how will the use of immune checkpoint inhibitors change during the pandemic?

An eLearning module is available for each of the three parts with pre- and post-assessment tests allowing learners to obtain a certificate of completion.





# COVID-19 Resources

EASL Education Yearbook – 2021

- **Obesity and fatty liver**

This episode of EASL's webcast series on COVID-19 and the liver examines the impact of the virus on patients with obesity and fatty liver disease. The panel of experts comprises Professor Sven Francque, Professor Nalu Navarro-Alvarez, Professor Luca Busetto, and Professor Carolyn Bramante. Professor Busetto begins by reviewing prevalence data on COVID-19 in people with obesity or metabolic syndrome, drawing from Italian and global experiences, and describes the biological mechanisms behind increased COVID-19 severity in these populations.

Professor Bramante reports on research linking fatty liver disease with severe COVID-19 and the potential for some medications to be protective against hospitalisation in these patients. Professor Navarro-Alvarez describes the mechanisms behind the elevated risk of COVID-19 and the impact of metabolic syndrome. The panel addresses several aspects including the importance of visceral adiposity and systemic inflammation.

## COVID-19 and the liver accredited online modules

- **Diagnostics of SARS-CoV-2**
- **Cirrhosis, liver cancer and transplantation**
- **Viral hepatitis elimination**
- **Obesity and fatty liver disease**

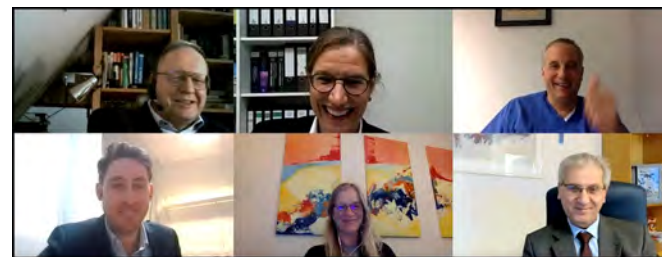


EASL Education Yearbook – 2021

## Webinar on demand: COVID-19 vaccination in patients with liver disease

This webinar dives into different issues related to COVID-19 vaccination including the relative risk for severe COVID-19 in patients with chronic liver diseases (cirrhosis, metabolic and autoimmune liver disease, liver transplantation) as compared to other high-risk populations (e.g. old age), the efficacy and safety of current COVID-19 vaccines (mRNA vaccines, vector vaccines), their contraindications and limitations in patients with liver diseases.

The scientific rationale for currently recommended vaccination strategies concerning patients with liver diseases has been also discussed, as well as the first outcome data of population based vaccination in patients with and without liver diseases.



# COVID-19 Resources

EASL Education Yearbook – 2021

EASL Education Yearbook – 2021



## Ask EASL: Patient-oriented audio podcast about COVID-19 vaccination in patients with liver disease

Ask EASL is an ongoing series of educational podcasts dedicated to answering questions from patients and patient organisations on important topics around liver disease.

In this podcast, leading experts answer a range of questions raised by EASL's Patient Synergies regarding the recently approved COVID-19 vaccinations. They address topics including the reasons for the rapid development of the vaccines, whether immunocompromised liver transplant patients should receive the vaccine, real-world data from vaccination programmes worldwide and the potential duration of immunity.

## EASL Quiz series

EASL quizzes are usually based on recommendations from clinical practice guidelines. Since COVID-19 is a recent severe disease so that established clinical practice guideline have not yet been issued, quiz questions and their "correct" answers are based on EASL position statements (1,2), observations in the EASL supported COVID-Hep and AASLD supported SECURE -cirrhosis registries (3), or recent publications referring to key information.

1. Boettler T, et al., Care of patients with liver disease during the COVID-19 pandemic: EASL-ESCMID position paper. JHEP Rep. 2020 Jun;2(3):100113.
2. Boettler T, et al., Impact of COVID-19 on the care of patients with liver disease: EASL-ESCMID position paper after 6 months of the pandemic. JHEP Rep. 2020 Oct;2(5):100169.
3. Marjot T, et al., Outcomes following SARS-CoV-2 infection in patients with chronic liver disease: An international registry study. J Hepatol. 2021 Mar;74(3):567-577.

## COVID-19 Resource Centre

- EASL COVID-19 webinars & webcasts
- Articles in EASL journals
- EASL-ESCMID Position Paper
- Frontline testimonials
- News from EASL supported COVID-Hep registry
- BioMed Alliance Joint Statement



# Patient Resources

50+ EASL Campus  
Resources

EASL has developed educational resources for patients with liver disease, providing answers to their questions for a better understanding of their disease.

Ask EASL: Patient-oriented audio podcast about COVID-19 vaccination in patients with liver disease

For more information about this content, please read our section dedicated to COVID-19 Resources.

EASL Patient Synergies Roundtable on Liver Cancer: On-demand Webinar

For Digital Liver Cancer Summit 2021, 5-6 February, and on the occasion of World Cancer Day, 4 February, EASL held a discussion aiming to identify the needs of liver cancer patients and their families, and the best ways to accompany them. The Roundtable discussion was an open interaction between scientists, patient representatives, and nurses on three topics identified by the EASL affiliated patient associations of EASL Patient Synergies:

- Early diagnosis and risk factors of liver cancer
- COVID-19 challenges and liver cancer care
- The inequality of the burden of cancer in different European countries



# Patient Resources

EASL Education Yearbook – 2021

EASL Education Yearbook – 2021

## ILC 2021: Public Health Takeaways

### Non-alcoholic fatty liver disease: A patient guideline

This patient guideline is intended for all patients at risk of or living with non-alcoholic fatty liver disease (NAFLD). NAFLD is the most frequent chronic liver disease worldwide and comes with a high disease burden. Yet, there is a lot of unawareness. Furthermore, many aspects of the disease are still to be unravelled, which has an important impact on the information that is given (or not) to patients. Its management requires a close interaction between patients and their many healthcare providers. It is important for patients to develop a full understanding of NAFLD in order to enable them to take an active role in their disease management.

This guide summarises the current knowledge relevant to NAFLD and its management. It has been developed by patients, patient representatives, clinicians and scientists and is based on current scientific recommendations, intended to support patients in making informed decisions.

## Infographic: Liver cancer explained

Liver cancer is the third leading cause of cancer-related deaths worldwide and the primary cause of death for patients with cirrhosis. Most liver cancers are hepatocellular carcinomas, however some patients develop intrahepatic cholangio-carcinomas (ICC) or rare tumours in non-cirrhotic livers. Chronic liver diseases, alcohol consumption, obesity and diabetes, non-alcoholic fatty liver disease (NAFLD), exposure to aflatoxins, as well as chronic infection with HBV or HCV are considered risk factors.

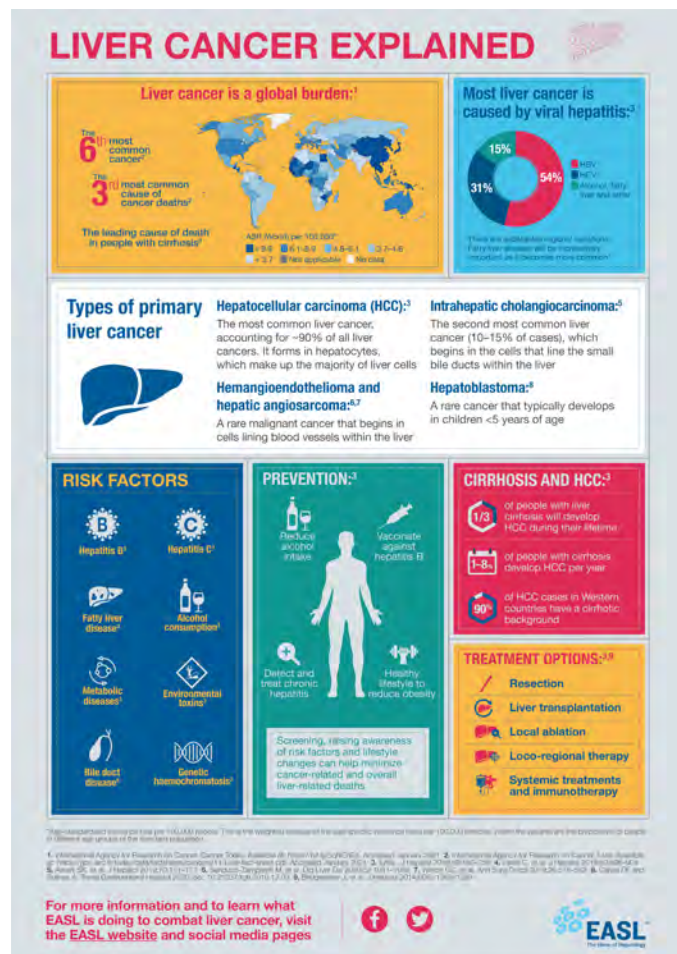
The burden of adult liver cancers and HCC is still increasing and various public health strategies have been developed for the prevention and control of this trend which will likely remain a major public health problem worldwide in the upcoming decades.





# Patient Resources

EASL Education Yearbook – 2021



## Nurses and AHPs

### 70+ EASL Campus Resources





# Nurses and AHPs

EASL Education Yearbook – 2021

To encourage professional development and to boost engagement among peers across Europe, EASL's Nurses and AHPs Task Force has created this liver disease learning centre providing the latest educational resources and a series of interactive development activities. Our aims include:

- offering education in an alternative format that reflects current challenges for education provision
- encouraging engagement and fostering links within the community
- serving as a vehicle for inter-country discussion of practice and learning from one another

## Conferences and Meetings

International Liver Congress™ 2021

- Nurses and AHPs Forum
- Nurses and AHPs Takeaways

## EASL Campus

EASL has launched in 2020 a new series of interprofessional live webinars to encourage engagement with nurses and allied health professionals (AHP) across Europe. Webinars are available on-demand on EASL Campus.

- **On-demand Webinar on Management of NAFLD – Integration of different perspectives**

# The International Liver Congress

## 800+ EASL Campus Resources



# The International Liver Congress™

EASL Education Yearbook – 2021

EASL Education Yearbook – 2021

## International Liver Congress™ 2021

### Post-Graduate Course: Lifestyle and the liver

This year's one-day Postgraduate Course addressed lifestyle and the liver, with specialists providing their input via cases that they presented. The course highlighted many clinical practice dilemmas and engaged the audience with these world-renowned experts on how to make optimal management decisions to help patients with liver disease.

The Postgraduate Course is divided into six sessions:

- Non-alcoholic fatty liver disease
- Impact of physical activity and diet on liver disease
- Nutritional and behavioural patterns affecting the liver
- Alcohol-related liver disease
- Alcohol-related liver disease
- Drugs, xenobiotic misuse, and liver toxicity
- Multidisciplinary outpatient approach to NAFLD and ALD

It concludes with a State-of-the-Art lecture on lifestyle and public health. In each session, a case was presented. The audience was able to reply to questions from chairs and live voting available. A course syllabus is available in PDF format for download from the congress website. An eLearning course has also been developed based on the PGC session held at ILC 2021 and is available on EASL Campus.

### Best of ILC 2021 slide decks:

- Cirrhosis and Complications
- Liver Tumours
- Metabolism, Alcohol and Toxicity
- Immune-mediated and Rare Diseases
- Viral Hepatitis
- Public Health
- Basic Science

### Takeaways

- Cirrhosis and Complications
- Liver Tumours
- Metabolism, Alcohol and Toxicity
- Immune-mediated and Rare Diseases
- Viral Hepatitis
- Public Health
- Basic Science
- Nurses and AHPs





# Gamification

EASL is putting the fun back into learning with gamification. Be rewarded as you discover EASL Campus. Unlock badges and level-up with experience points (XP) as you consult different resource types in the different topic tracks. Watch webinars, listen to podcasts, take the EASL Quiz, learn with our eLearning modules and see what happens. Badges demonstrate your interest in a topic, evidence of professional development and your commitment to continuous education in Hepatology. Login to your EASL Campus account, start discovering the world of Gamification and unlock your inner competitiveness!

## EASL ILC 30 Day Challenge

EASL organised a 30-Day Challenge around ILC 2021. To increase engagement with the delegates during the digital congress, short and fun mini-challenges were proposed, allowing to unlock additional challenges and rewards before, during and after the ILC 2021!

## EASL Festive Season Calendar

As 2021 draws to a close, EASL is proposing a festive season calendar. As of 1 December, and until the 24 December, you were able to open one door every day. What is behind each door? Not chocolate, but 24 mini-challenges. Take them all and earn a special badge.





# Grants

## EASL Daniel Alagille Award

The Daniel Alagille Award is intended for promising young scientists with a PhD and/or an MD degree, holding a full-time position at a European institution and exploring the frontiers of paediatric or adult genetic cholestatic diseases. This grant offers:

- €25,000 of funding for the entire research project over up to two years
- a bursary to attend the International Liver Congress™

## EASL Registry Data Collection Grant

As a major European association dedicated to pursuing excellence in liver research and in providing education to all those interested in hepatology, EASL also promotes research and education through the sharing of research findings in hepatology. To mitigate the difficulties faced by researchers in liver field, the EASL Governing Board created the EASL Registry Data Collection Grant.

Funding provided by EASL is intended to help consortia groups dedicated to data gathering with specific focus on liver disease. A total of €100,000 will be awarded to support one or more consortia groups.



# Resource Type

## Clinical Practice Guidelines

Publication to assist physicians, healthcare providers, patients, and other interested parties in the clinical decision-making process. The EASL Guidelines present a range of state-of-the-art approaches for the diagnosis and treatment of liver diseases.

## Conferences and meetings

EASL organises, together with Key Opinion Leaders, scientific events throughout the year covering the latest advances in hepatology in each liver specialty. In addition, EASL events offer excellent international networking opportunity.

Events regrouping specialists from all over the world sharing recent data, presenting studies, and findings and discussing the hottest topics on liver disease. In addition, EASL events offer excellent international networking opportunity.

## Conference webcasts

Recordings of presentations given during EASL events, allowing the share of the latest discoveries in the liver research field to the audience.

## eLearning courses and modules

EASL is using a web-based electronic educational technology to provide online courses and modules destined to the liver community. The courses offer a wide range of topics and are designed to provide the latest knowledge and best practice to stay at the top level.





# Resource Type

EASL Education Yearbook – 2021

## EASL Quiz

Each quiz presents a short case, drawing from EASL's Clinical Practice Guidelines and relating to the latest in therapeutic developments. It poses a question and offers 4–5 possible answers to choose from. Questions are published every two weeks and are generated based on EASL Clinical Practice Guidelines belonging to a certain topic. Explanatory comments based on the most recent EASL CPGs and recommendations and references are provided for each quiz questions. Further challenge yourself with the special edition quizzes. Test your knowledge on Covid-19 and the Liver as well as Rare Liver Diseases.

## EASL Studio

EASL Studio is a new platform through which we will be exploring hepatology every week, from every angle. Through live debates, interviews, and roundtable discussions, EASL Studio will be a chance to peak behind the scenes. Hear the expert's opinion on the latest research. Discover what it's like to be a young investigator. Meet the Nurses, the allied health professionals, and the patients they work with.

## ePosters

Posters in an electronic format exhibited during EASL conferences and meetings.

## Infographics

Resource designed mainly for patients with simple take home messages and illustrating key information for a better understanding of liver diseases. Two types of format, static infographic (PDF document) or animated infographics (video).

## Masterclasses

Provide a unique educational collaboration of clinical, basic, and translational scientists from leading academic medical institutions from both sides of the Atlantic.

Participants will attend an intensive training session designed for future leaders in academic hepatology. The Masterclass is designed to give promising early-stage investigators (junior faculty members) the opportunity to advance their careers in hepatology through a mix of scientific and professional workshops aimed at developing personal and professional skills.

## Podcasts

Audio interview dedicated mainly to patients with experts addressing questions from patients and patient organisations on various topics around liver disease.



# Resource Type

EASL Education Yearbook – 2021

## Schools

The schools contribute to the training of new generations of hepatologists and are a major element of our association. They are aimed at young fellows enrolled in hepatology-oriented departments or more experienced clinicians who want to be exposed to the newest trends in hepatology.

For selected applicants, EASL will cover transportation costs to attend the school and accommodation during the event (details will be provided individually once the selection process has been done). Application is open to young fellows under the age of 35 and/or still in training. Approximately 30 places are available for each school and only EASL members are allowed to apply.

## Takeaways

Webcasts highlighting the most impactful science from a congress or summit, with leading expert discussing and putting it into perspective.

## Webinars

Online live events with worldwide experts presenting and discussing key topics. Recording of these webinars are available on demand on EASL Campus after the event.



FIND OUT MORE  
[www.easl.eu/education](http://www.easl.eu/education)  
[www.easlcampus.eu](http://www.easlcampus.eu)

